

Datasheet for ABIN3092994

HTRA3 Protein (AA 18-453) (His tag)**3** Images[Go to Product page](#)

Overview

Quantity:	1 mg
Target:	HTRA3
Protein Characteristics:	AA 18-453
Origin:	Human
Source:	Escherichia coli (E. coli)
Protein Type:	Recombinant
Purification tag / Conjugate:	This HTRA3 protein is labelled with His tag.
Application:	ELISA, Western Blotting (WB), SDS-PAGE (SDS), Crystallization (Crys)

Product Details

Sequence:	<p>MREPPAAPCP ARCDVSRCPSPRCPGGYVPD LCNCCLVCAA SEGEPCGGPL DSPCGESLEC VRGLCRCRWS HAVCGTDGHT YANVCALQAA SRRALQLSGT PVRQLQKGAC PLGLHQLSSP RYKFNFIAADV VEKIAPAVVH IELFLRHPLF GRNVPLSSGS GFIMSEAGLI ITNAHVSSN SAAPGRQQLK VQLQNGDSYE ATIKDIDKKS DIATIKIHPK KKLPVLLLGH SADLRPGFEV VAIGSPFALQ NTVTTGIVST AQREGRELGL RDSMDYIQT DAIINYGNSG GPLVNL DGEV IGINTLKVTA GISFAIPSDR ITRFLTEFQD KQIKDWKKRF IGIRMTITP SLVDELKASN PDFPEVSSGI YVQEAPNSP SQRGGIQDGD IIVKVNGRPL VDSSELQEAV LTESPLLLEV RRGNDLLFS IAPEVVM HHHHHH</p> <p>Sequence including C-terminal His-tag.</p>
Characteristics:	<ul style="list-style-type: none">• Made in Germany - from design to production - by highly experienced protein experts.• Human HTRA3 Protein (raised in E. Coli) purified by multi-step, protein-specific process to ensure crystallization grade.

Product Details

- State-of-the-art algorithm used for plasmid design (Gene synthesis).
- Tag Location: C-terminal His Tag

The concentration of our recombinant proteins is measured using the absorbance at 280nm. The protein's absorbance will be measured in several dilutions and is measured against its specific reference buffer.

The concentration of the protein is calculated using its specific absorption coefficient. We use the Expasy's protparam tool to determine the absorption coefficient of each protein.

Purification:	The protein is purified from the cleared cell lysate using EDTA resistant His-tag capture materials. Eluate fractions are analyzed by SDS-PAGE. Protein containing fractions are subjected to a second purification step through size exclusion chromatography. Eluate fractions are analyzed by SDS-PAGE and Western blot.
Purity:	>95 % as determined by SDS PAGE, Size Exclusion Chromatography and Western Blot.
Sterility:	0.22 µm filtered
Endotoxin Level:	Endotoxin has not been removed. Please contact us if you require endotoxin removal.
Grade:	Crystallography grade

Target Details

Target:	HTRA3
Alternative Name:	HTRA3 (HTRA3 Products)
Background:	Serine protease that cleaves beta-casein/CSN2 as well as several extracellular matrix (ECM) proteoglycans such as decorin/DCN, biglycan/BGN and fibronectin/FN1. Inhibits signaling mediated by TGF-beta family proteins possibly indirectly by degradation of these ECM proteoglycans (By similarity). May act as a tumor suppressor. Negatively regulates, in vitro, trophoblast invasion during placental development and may be involved in the development of the placenta in vivo. May also have a role in ovarian development, granulosa cell differentiation and luteinization (PubMed:21321049, PubMed:22229724). {ECO:0000250 UniProtKB:Q9D236, ECO:0000269 PubMed:21321049, ECO:0000269 PubMed:22229724}.
Molecular Weight:	47.9 kDa Including tag.
UniProt:	P83110

Application Details

Application Notes:	In addition to the applications listed above we expect the protein to work for functional studies
--------------------	---

Application Details

as well. As the protein has not been tested for functional studies yet we cannot offer a guarantee though.

Comment: In cases in which it is highly likely that the recombinant protein with the default tag will be insoluble our protein lab may suggest a higher molecular weight tag (e.g. GST-tag) instead to increase solubility. We will discuss all possible options with you in detail to assure that you receive your protein of interest.

Restrictions: For Research Use only

Handling

Format: Liquid

Buffer: 100 mM NaCl, 20 mM Hepes, 10% glycerol. pH value is at the discretion of the manufacturer.

Handling Advice: Avoid repeated freeze-thaw cycles.

Storage: -80 °C

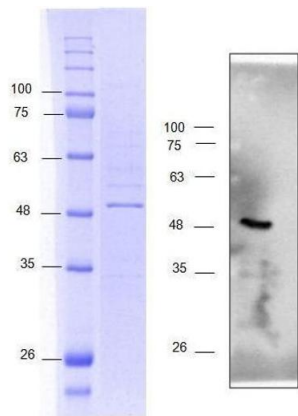
Storage Comment: Store at -80°C.

Expiry Date: Unlimited (if stored properly)

Images



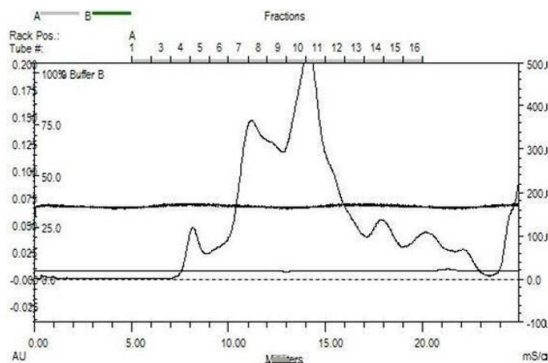
Image 1. „Crystallography Grade“ protein due to multi-step, protein-specific purification process



HtrA Serine Peptidase 3 (HTRA3) (AA 18-453)
protein (His tag); fraction 10 and 11

Western Blotting

Image 2.



HtrA Serine Peptidase 3 (HTRA3) (AA 18-453)
protein (His tag); Gel filtration Superdex 200
10/300 GL fraction 10 and 11 were pooled

Size-exclusion chromatography-High Pressure Liquid Chromatography

Image 3.