

Datasheet for ABIN3093476

LNPEP Protein (AA 132-1025) (His tag)

3 Images

[Go to Product page](#)

Overview

Quantity:	1 mg
Target:	LNPEP
Protein Characteristics:	AA 132-1025
Origin:	Human
Source:	Insect Cells
Protein Type:	Recombinant
Purification tag / Conjugate:	This LNPEP protein is labelled with His tag.
Application:	Western Blotting (WB), SDS-PAGE (SDS), ELISA, Crystallization (Crys)

Product Details

Sequence:	MKTIIALSYI FCLVFA PRCTFTKEGC HKKNQSIGLI QPFATNGKLF PWAQIRLPTA VVPLRYELSL HPNLTSMTFR GSVTISVQAL QVTWNILHS TGHNISRVTF MSAVSSQEKQ AEILEYAYHG QIAIVAPEAL LAGHNYTLKI EYSANISSY YGFYGFSTYD ESNEKKYFAA TQFEPLAARS AFPCFDEPAF KATFIIKIIR DEQYTALSNM PKKSSVVLDD GLVQDEFSES VKMSTYLVAF IVGEMKNLSQ DVNGTLVSIY AVPEKIGQVH YALETTVKLL EFFQNYFEIQ YPLKKLDLVA IPDFEAGAME NWGLLTFREE TLLYDSNTSS MADRKLVTKI IAHELAHQWF GNLVTMKWWN DLWLNEGFAT FMEYFSLEKI FKELSSYEDF LDARFKTMKK DSLNSSHPIS SSVQSSEQIE EMFDSL SYFK GSSLLLMLKT YLSEDFVQHA VVLYLHNHSY ASIQSDDLWD SFNEVTNQTL DVKRMMKTWT LQKGFPLVTV QKKGKELFIQ QERFFLNMKP EIQPSDTSYL WHIPLSYVTE GRNYSKYQSV SLLDKKSGVI NLTEEV LWVK VNINMNGYYI VHYADDDWEA LIHQLKINPY VLSDKDRANL INNIFELAGL GKVPLKRAFD LINYLGNEHNH TAPITEALFQ TDLIYNLLEK LGYMDLASRL VTRVFKLLQN QIQQQTWTDE GTPSMRELRS ALLEFACTHN LGNCSTTAMK
-----------	--

LFDDWMASNG TQSLPTDVM T VFKVGA KTD KGWSFLLGKY ISIGSEAEKN KILEALASSE
DVRKLYWLMK SSLNGDNFRT QKLSFIIRTV GRHFPGHLLA WDFVKENWNK LVQKFPLGSY
TIQNIVAGST YLFSTKTHLS EVQAFFENQS EATFRLRCVQ EALEVIQLNI QWMEKNLKS L
TWWLHHHHHH

Characteristics:

- Made in Germany - from design to production - by highly experienced protein experts.
- Human LNPEP Protein (raised in Insect Cells) purified by multi-step, protein-specific process to ensure crystallization grade.
- State-of-the-art algorithm used for plasmid design (Gene synthesis).

This protein is a made to order protein and will be made for the first time for your order. Our experts in the lab will ensure that you receive a correctly folded protein.

The big advantage of ordering our made-to-order proteins in comparison to ordering custom made proteins from other companies is that there is no financial obligation in case the protein cannot be expressed or purified.

In the unlikely event that the protein cannot be expressed or purified we do not charge anything (other companies might charge you for any performed steps in the expression process for custom-made proteins, e.g. fees might apply for the expression plasmid, the first expression experiments or purification optimization).

When you order this made-to-order protein you will only pay upon receipt of the correctly folded protein. With no financial risk on your end you can rest assured that our experienced protein experts will do everything to make sure that you receive the protein you ordered.

The concentration of our recombinant proteins is measured using the absorbance at 280nm.

The protein's absorbance will be measured in several dilutions and is measured against its specific reference buffer.

The concentration of the protein is calculated using its specific absorption coefficient. We use the ExPASy's protParam tool to determine the absorption coefficient of each protein.

Purification:

The protein is purified from the cleared cell lysate using His-tag capture materials. Eluate fractions are analyzed by SDS-PAGE. Protein containing fractions are subjected to a second purification step through size exclusion chromatography. Eluate fractions are analyzed by SDS-PAGE and Western blot.

Purity:

>95 % as determined by SDS PAGE, Size Exclusion Chromatography and Western Blot.

Sterility:

0.22 µm filtered

Endotoxin Level:

Protein is endotoxin free.

Grade:

Crystallography grade

Target Details

Target:	LNPEP
Alternative Name:	LNPEP (LNPEP Products)
Background:	Release of an N-terminal amino acid, cleaves before cysteine, leucine as well as other amino acids. Degrades peptide hormones such as oxytocin, vasopressin and angiotensin III, and plays a role in maintaining homeostasis during pregnancy. May be involved in the inactivation of neuronal peptides in the brain. Cleaves Met-enkephalin and dynorphin. Binds angiotensin IV and may be the angiotensin IV receptor in the brain. {ECO:0000269 PubMed:11389728, ECO:0000269 PubMed:11707427, ECO:0000269 PubMed:1731608}.
Molecular Weight:	103.6 kDa Including tag.
UniProt:	Q9UIQ6
Pathways:	Regulation of long-term Neuronal Synaptic Plasticity

Application Details

Application Notes:	In addition to the applications listed above we expect the protein to work for functional studies as well. As the protein has not been tested for functional studies yet we cannot offer a guarantee though.
Comment:	In cases in which it is highly likely that the recombinant protein with the default tag will be insoluble our protein lab may suggest a higher molecular weight tag (e.g. GST-tag) instead to increase solubility. We will discuss all possible options with you in detail to assure that you receive your protein of interest.
Restrictions:	For Research Use only

Handling

Format:	Liquid
Buffer:	30 mM Hepes, pH 7.4, 2,5 mM EDTA, 100 mM NaCl
Handling Advice:	Avoid repeated freeze-thaw cycles.
Storage:	-80 °C
Storage Comment:	Store at -80°C.
Expiry Date:	Unlimited (if stored properly)



Image 1. „Crystallography Grade“ protein due to multi-step, protein-specific purification process

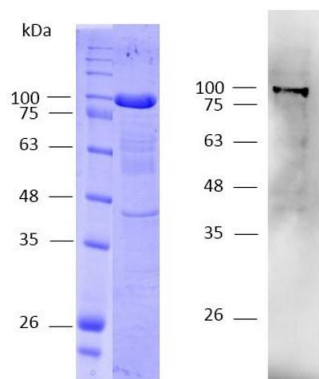


Image 2.

Leucyl / cystinyl Aminopeptidase
(LNPEP, AA 132-1025), fraction 15 - 17

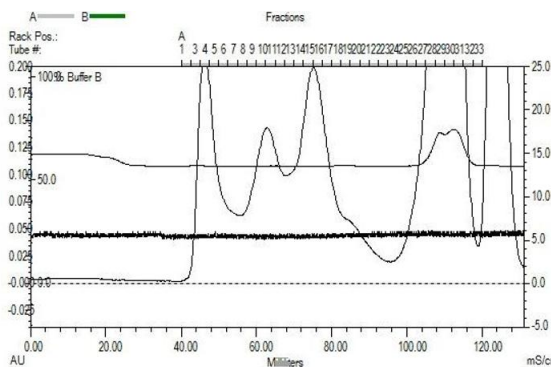


Image 3.

Leucyl / cystinyl Aminopeptidase (LNPEP, AA 132-1025), gel filtration Superdex 200 16/600; fraction 15 - 17