

Datasheet for ABIN3094122

**Nephrin Protein (AA 23-1055) (His tag)****3** Images[Go to Product page](#)

## Overview

Quantity:	1 mg
Target:	Nephrin (NPHS1)
Protein Characteristics:	AA 23-1055
Origin:	Human
Source:	Insect Cells
Protein Type:	Recombinant
Purification tag / Conjugate:	This Nephrin protein is labelled with His tag.
Application:	Western Blotting (WB), SDS-PAGE (SDS), ELISA, Crystallization (Crys)

## Product Details

Sequence:	<p>MQLAIPASVP RGFWALPENL TVVEGASVEL RCGVSTPGSA VQWAKDGLLL GPDPRI PGFP R YRLEGDPAR GEFHLHIEAC DLSDDAEYEC QVGRSEMGPE LVSPRVLSI LVPPKLLLLT PEAGTMVTWV AGQEYVVNCV SGDAKPAPDI TILLSGQTIS DISANVNEGS QQKLFTVEAT ARVTPRSSDN RQLLVCEASS PALEAPIKAS FTVNVLFPPG PPVIEWPGLD EGHVRAGQSL ELPCVARGGN PLATLQWLKN GQPVSTAWGT EHTQAVARSV LVMTVRPEDH GAQLSCEAHN SVSAGTQEHG ITLQVTFPPS AIILGSASQ TENKNVTLS VSKSSRPRVL LRWWLGWRQL LPMEETVMDG LHGGHISMSN LTFLARREDN GLTLTCEAFS EAFTKETFKK SLILNVKYP A QKLWIEGPPE GQKL RAGTRV RLVCLAIGGN PEPSLMWYKD SRTVTESRLP QESRRVHLGS VEKSGSTFSR ELVLVTGPSD NQAKFTCKAG QLSASTQLAV QFPPTNVTIL ANASALRPGD ALNLTCVSVS SNPPVNLSWD KEGERLEGVA APPRRAPFKG SAAARSVLLQ VSSRDHGQRV TCRAHSAELR ETVSSFYRLN VLYRPEFLGE QVLVVTAVEQ GEALLPVSVS ANPAPEAFNW TFRGYRLSPA GGPRHRILSS GALHLWNVTR ADDGLYQLHC QNSEGTAEAR LRLDVHYAPT</p>
-----------	---

IRALQDPTEV NVGGSVDIVC TVDANPILPG MFNWERLGED EEDQSLDDME KISRGPTGRL  
RIHHAKLAQA GAYQCIVDNG VAPPARRLLR LVVRFAPQVE HPTPLTKVAA AGDSTSSATL  
HCRARGVPNI VFTWTKNGVP LDLQDPYTE HTYHQGGVHS SLLTIANVSA AQDYALFTCT  
ATNALGSDQT NIQLVSISRP DPPSGLKVVS LTPHSVGLEW KPGFDGGLPQ RFCIRYEALG  
TPGFHYVDVV PPQATTFTLT GLQPSTRYRV WLLASNALGD SGLADKGTQL PITTPGLHQP  
SGEPEDQLPT EPPSGSSGHH HHHH

Specificity: C-terminal His-tag

- Characteristics:
- Made in Germany - from design to production - by highly experienced protein experts.
  - Human NPBS1 Protein (raised in Insect Cells) purified by multi-step, protein-specific process to ensure crystallization grade.
  - State-of-the-art algorithm used for plasmid design (Gene synthesis).

This made-to-order protein has already been successfully produced. Please let us know if you are interested in purchasing a smaller amount of this protein. We will check our stock and make you a customized quote in case we can provide this protein in a smaller amount..

When you order this made-to-order protein you will only pay upon receipt of the correctly folded protein. With no financial risk on your end you can rest assured that our experienced protein experts will do everything to make sure that you receive the protein you ordered.

The concentration of our recombinant proteins is measured using the absorbance at 280nm. The protein's absorbance will be measured in several dilutions and is measured against its specific reference buffer.

The concentration of the protein is calculated using its specific absorption coefficient. We use the Expasy's protparam tool to determine the absorption coefficient of each protein.

- Purification:
- Two step purification of proteins expressed in baculovirus infected SF9 insect cells:
1. In a first purification step, the protein is purified from the cleared cell lysate using three different His-tag capture materials: high yield, EDTA resistant, or DTT resistant. Eluate fractions are analyzed by SDS-PAGE.
  2. Protein containing fractions of the best purification are subjected to second purification step through size exclusion chromatography. Eluate fractions are analyzed by SDS-PAGE and Western blot.

Purity: >95 % as determined by SDS PAGE, Size Exclusion Chromatography and Western Blot.

Sterility: 0.22 µm filtered

Endotoxin Level: Protein is endotoxin free.

Grade: Crystallography grade

## Target Details

Target:	Nephrin (NPHS1)
Alternative Name:	NPHS1 ( <a href="#">NPHS1 Products</a> )
Background:	Seems to play a role in the development or function of the kidney glomerular filtration barrier. Regulates glomerular vascular permeability. May anchor the podocyte slit diaphragm to the actin cytoskeleton. Plays a role in skeletal muscle formation through regulation of myoblast fusion (By similarity). {ECO:0000250 UniProtKB:Q9QZS7, ECO:0000250 UniProtKB:Q9R044}.
Molecular Weight:	112.6 kDa Including tag.
UniProt:	<a href="#">O60500</a>
Pathways:	<a href="#">Regulation of Actin Filament Polymerization</a> , <a href="#">Skeletal Muscle Fiber Development</a>

## Application Details

Application Notes:	In addition to the applications listed above we expect the protein to work for functional studies as well. As the protein has not been tested for functional studies yet we cannot offer a guarantee though.
Comment:	In cases in which it is highly likely that the recombinant protein with the default tag will be insoluble our protein lab may suggest a higher molecular weight tag (e.g. GST-tag) instead to increase solubility. We will discuss all possible options with you in detail to assure that you receive your protein of interest.
Restrictions:	For Research Use only

## Handling

Format:	Liquid
Buffer:	20 mM HEPES, pH 7.4; 150 mM NaCl, 2 mM DTT
Handling Advice:	Avoid repeated freeze-thaw cycles.
Storage:	-80 °C
Storage Comment:	Store at -80°C.
Expiry Date:	Unlimited (if stored properly)

Size-exclusion chromatography-High Pressure Liquid Chromatography

Image 1.

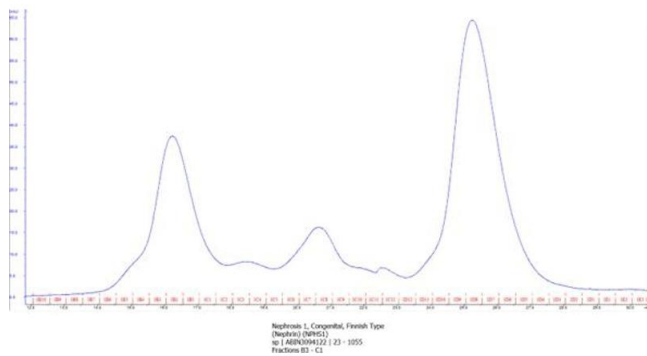
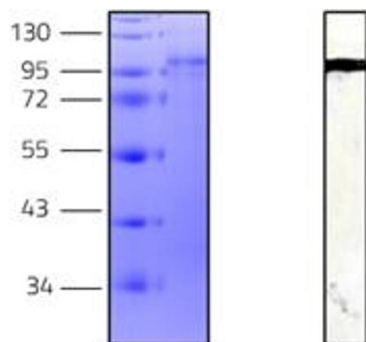


Image 2. „Crystallography Grade“ protein due to multi-step, protein-specific purification process



Western Blotting

Image 3.

Nephrosis 1, Congenital, Finnish  
Type (Nephrin) (NPHS1)  
sp | ABIN3094122 | 23 – 1055  
Fractions B3 – C1