

Datasheet for ABIN309831
anti-MCM8 antibody (C-Term)[Go to Product page](#)

3 Images

1 Publication

Overview

Quantity:	25 µL
Target:	MCM8
Binding Specificity:	C-Term
Reactivity:	Human, Rat, Mouse, Cow, Horse, Guinea Pig, Rabbit, Dog, Zebrafish (Danio rerio)
Host:	Rabbit
Clonality:	Polyclonal
Conjugate:	This MCM8 antibody is un-conjugated
Application:	Western Blotting (WB), Immunohistochemistry (IHC)

Product Details

Immunogen:	The immunogen is a synthetic peptide directed towards the C terminal region of human MCM8
Sequence:	IRLTEARARL ELREEATKED AEDIVEIMKY SMLGTYSDEF GNLDFFERSQH
Predicted Reactivity:	Cow: 100%, Dog: 93%, Guinea Pig: 100%, Horse: 100%, Human: 100%, Mouse: 100%, Rabbit: 100%, Rat: 100%, Zebrafish: 86%
Characteristics:	This is a rabbit polyclonal antibody against MCM8. It was validated on Western Blot and immunohistochemistry.
Purification:	Affinity Purified

Target Details

Target:	MCM8
---------	------

Target Details

Alternative Name:	MCM8 (MCM8 Products)
Background:	<p>MCM8 is one of the highly conserved mini-chromosome maintenance proteins (MCM) that are essential for the initiation of eukaryotic genome replication. The hexameric protein complex formed by the MCM proteins is a key component of the pre-replication complex (pre_RC) and may be involved in the formation of replication forks and in the recruitment of other DNA replication related proteins. This protein contains the central domain that is conserved among the MCM proteins. This protein has been shown to co-immunoprecipitate with MCM4, 6 and 7, which suggests that it may interact with other MCM proteins and play a role in DNA replication. Alternatively spliced transcript variants encoding distinct isoforms have been described. The protein encoded by this gene is one of the highly conserved mini-chromosome maintenance proteins (MCM) that are essential for the initiation of eukaryotic genome replication. The hexameric protein complex formed by the MCM proteins is a key component of the pre-replication complex (pre_RC) and may be involved in the formation of replication forks and in the recruitment of other DNA replication related proteins. This protein contains the central domain that is conserved among the MCM proteins. This protein has been shown to co-immunoprecipitate with MCM4, 6 and 7, which suggests that it may interact with other MCM proteins and play a role in DNA replication. Alternatively spliced transcript variants encoding distinct isoforms have been described.</p> <p>Alias Symbols: C20orf154, MGC119522, MGC119523, MGC12866, MGC4816, REC, dJ967N21.5</p> <p>Protein Interaction Partner: MCMBP, MCM4, MCM6, MCM7, ORC2, CDC6,</p> <p>Protein Size: 840</p>
Molecular Weight:	94 kDa
Gene ID:	84515
NCBI Accession:	NM_032485 , NP_115874
UniProt:	Q9UJA3
Pathways:	Mitotic G1-G1/S Phases , DNA Replication , Synthesis of DNA

Application Details

Application Notes:	Optimal working dilutions should be determined experimentally by the investigator.
Comment:	Antigen size: 840 AA
Restrictions:	For Research Use only

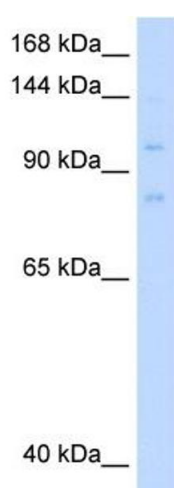
Handling

Format:	Liquid
Concentration:	Lot specific
Buffer:	Liquid. Purified antibody supplied in 1x PBS buffer with 0.09 % (w/v) sodium azide and 2 % sucrose.
Preservative:	Sodium azide
Precaution of Use:	This product contains Sodium azide: a POISONOUS AND HAZARDOUS SUBSTANCE which should be handled by trained staff only.
Handling Advice:	Avoid repeated freeze-thaw cycles.
Storage:	-20 °C
Storage Comment:	For short term use, store at 2-8°C up to 1 week. For long term storage, store at -20°C in small aliquots to prevent freeze-thaw cycles.

Publications

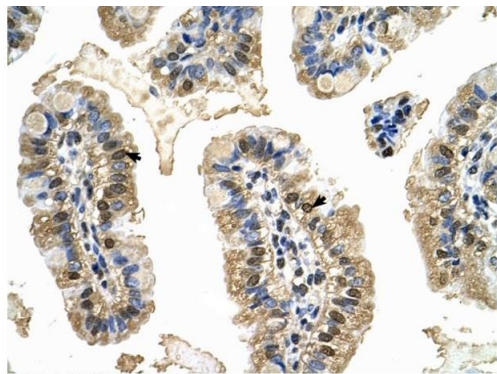
Product cited in:	Lazrek, Goffard, Schanen, Karquel, Bocket, Lion, Devaux, Hedouin, Gosset, Hober: "Detection of hepatitis C virus antibodies and RNA among medicolegal autopsy cases in Northern France." in: Diagnostic microbiology and infectious disease , Vol. 55, Issue 1, pp. 55-8, (2006) (PubMed).
-------------------	---

Images



Western Blotting

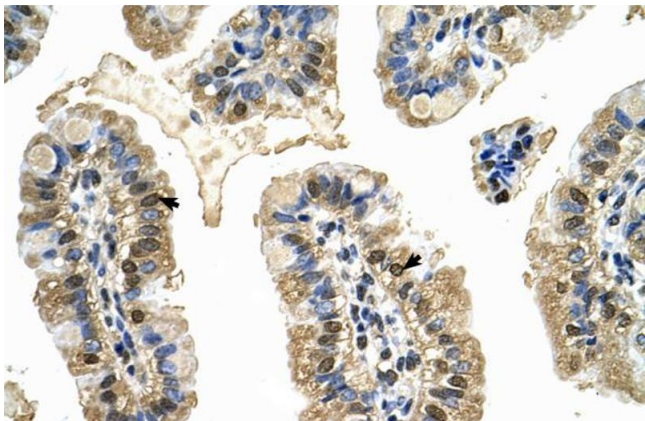
Image 1. WB Suggested Anti-MCM8 Antibody Titration: 0.2-1 ug/ml Positive Control: 721_B cell lysate



Rabbit Anti-MCM8 Antibody
Catalog Number: ARP36668
Lot Number: QC11219
Paraffin Embedded Tissue: Human Intestine
Cells with Positive label: Epithelial cells of intestinal villus (Indicated with Arrows)
Antibody Concentration: 4.0-8.0 µg/ml
Magnification: 400X

Immunohistochemistry

Image 2. Human Intestine



Immunohistochemistry

Image 3. Human Intestine