

Datasheet for ABIN3098888 PLP1 Protein (AA 2-277)



[Go to Product page](#)

2 Images

Overview

Quantity:	0.25 mg
Target:	PLP1
Protein Characteristics:	AA 2-277
Origin:	Human
Source:	Insect Cells
Protein Type:	Recombinant
Application:	Western Blotting (WB), SDS-PAGE (SDS), ELISA, Crystallization (Crys)

Product Details

Sequence: MGLLECCARC L VGAPFASLVA TGLCFFGVAL FCGCGHEALT GTEKLIETYF SKNYQDYEYL
INVIHAFQYV IYGTASFFFL YGALLLAEGF YTTGAVRQIF GDYKTTICGK GLSATVTGGQ
KGRGSRGQH Q AHSLERVCHC LGKWLGHDPK FVGITYALTV VWLLVFACSA VPVYIYFNTW
TTCQSIAFPS KTSASIGSLC ADARMYGVL P WNAFPGKVCG SNLLSICKTA EFQMTFHLFI
AAFVGAAATL VSLLTFMIAA TYNFAVLKLM GRGTFKFNLY

- Characteristics:
- Made in Germany - from design to production - by highly experienced protein experts.
 - Human PLP1 Protein (raised in Insect Cells) purified by multi-step, protein-specific process to ensure crystallization grade.
 - State-of-the-art algorithm used for plasmid design (Gene synthesis).

The concentration of our recombinant proteins is measured using the absorbance at 280nm. The protein's absorbance will be measured in several dilutions and is measured against its specific reference buffer.

The concentration of the protein is calculated using its specific absorption coefficient. We use the Expasy's protparam tool to determine the absorption coefficient of each protein.

Product Details

Purification:	The protein is purified from the cleared cell lysate using Rho1D4 capture materials. Eluate fractions are analyzed by SDS-PAGE. Protein containing fractions are subjected to a second purification step through size exclusion chromatography. Eluate fractions are analyzed by SDS-PAGE and Western blot.
Purity:	>95 % as determined by SDS PAGE, Size Exclusion Chromatography and Western Blot.
Sterility:	0.22 µm filtered
Endotoxin Level:	Protein is endotoxin-free.
Grade:	Crystallography grade

Target Details

Target:	PLP1
Alternative Name:	PLP1 (PLP1 Products)
Background:	This is the major myelin protein from the central nervous system. It plays an important role in the formation or maintenance of the multilamellar structure of myelin.
Molecular Weight:	30.6 kDa
UniProt:	P60201

Application Details

Application Notes:	In addition to the applications listed above we expect the protein to work for functional studies as well. As the protein has not been tested for functional studies yet we cannot offer a guarantee though.
Comment:	In cases in which it is highly likely that the recombinant protein with the default tag will be insoluble our protein lab may suggest a higher molecular weight tag (e.g. GST-tag) instead to increase solubility. We will discuss all possible options with you in detail to assure that you receive your protein of interest.
Restrictions:	For Research Use only

Handling

Format:	Liquid
Buffer:	In solution (20 mM Hepes, pH 7, 100 mM NaCl, 0,1 % OGNG)

Handling

Handling Advice: Avoid repeated freeze-thaw cycles.

Storage: -80 °C

Storage Comment: Store at -80°C.

Expiry Date: Unlimited (if stored properly)

Images

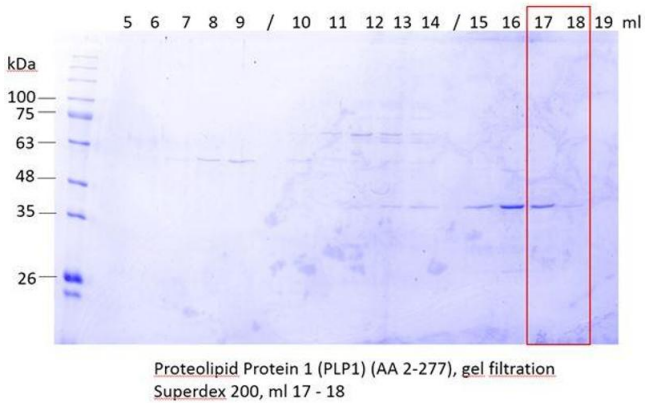


Image 1.

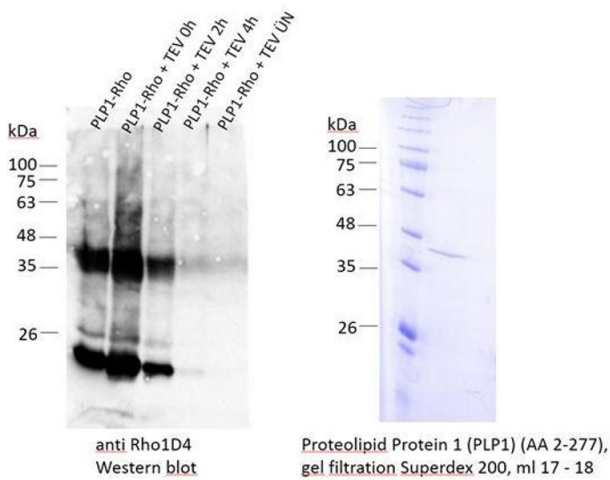


Image 2.