

Datasheet for ABIN3100004
EBP Protein (AA 2-230) (rho-1D4 tag)[Go to Product page](#)

4 Images

Overview

Quantity:	1 mg
Target:	EBP
Protein Characteristics:	AA 2-230
Origin:	Human
Source:	Insect Cells
Protein Type:	Recombinant
Purification tag / Conjugate:	This EBP protein is labelled with rho-1D4 tag.
Application:	SDS-PAGE (SDS), Western Blotting (WB), Crystallization (Crys), ELISA

Product Details

Sequence:	<p>TTNAGPLHPY WPQHLRLDNF VPNDRPTWHI LAGLFSVTGV LVVTTWLLSG RAAVVPLGTW RRRLSLCWFAV CGFIHLVIEG WFLVLYEDLL GDQAFLSQLW KEYAKGDSRY ILGDNFTVCM ETITACLWGP LSLWVVIAFL RQHPLRFILQ LVVSVGQIYG DVLYFLTEHR DGFQHGELGH PLYFWFYFVF MNALWLVLPV VLVLDAVKHL THAQSTLDAK ATKAKSKKN</p> <p>GSSGTETSQVAPA</p> <p>C-terminal Rho-tag</p>
Characteristics:	<ul style="list-style-type: none">• Made in Germany - from design to production - by highly experienced protein experts.• Human EBP Protein (raised in Insect Cells) purified by multi-step, protein-specific process to ensure crystallization grade.• State-of-the-art algorithm used for plasmid design (Gene synthesis). <p>This protein is a made to order protein and will be made for the first time for your order. Our experts in the lab will ensure that you receive a correctly folded protein.</p>

Product Details

The big advantage of ordering our made-to-order proteins in comparison to ordering custom made proteins from other companies is that there is no financial obligation in case the protein cannot be expressed or purified.

In the unlikely event that the protein cannot be expressed or purified we do not charge anything (other companies might charge you for any performed steps in the expression process for custom-made proteins, e.g. fees might apply for the expression plasmid, the first expression experiments or purification optimization).

When you order this made-to-order protein you will only pay upon receipt of the correctly folded protein. With no financial risk on your end you can rest assured that our experienced protein experts will do everything to make sure that you receive the protein you ordered.

The concentration of our recombinant proteins is measured using the absorbance at 280nm. The protein's absorbance will be measured in several dilutions and is measured against its specific reference buffer.

The concentration of the protein is calculated using its specific absorption coefficient. We use the ExPASy's protparam tool to determine the absorption coefficient of each protein.

Purification:	<p>The protein is purified from the cleared cell lysate using Rho1D4-tag capture materials. Eluate fractions are analyzed by SDS-PAGE.</p> <p>Protein containing fractions are subjected to a second purification step through size exclusion chromatography. Eluate fractions are analyzed by SDS-PAGE and Western blot.</p>
Purity:	>95 % as determined by SDS PAGE, Size Exclusion Chromatography and Western Blot.
Sterility:	0.22 µm filtered
Endotoxin Level:	Protein is endotoxin-free.
Grade:	Crystallography grade

Target Details

Target:	EBP
Alternative Name:	EBP (EBP Products)
Background:	Catalyzes the conversion of Delta(8)-sterols to their corresponding Delta(7)-isomers.
Molecular Weight:	27.4 kDa Including tag.
UniProt:	Q15125

Application Details

Application Notes: In addition to the applications listed above we expect the protein to work for functional studies as well. As the protein has not been tested for functional studies yet we cannot offer a guarantee though.

Restrictions: For Research Use only

Handling

Format: Liquid

Buffer: in solution (20 mM Hepes, pH 7.5, 100 mM NaCl, 0.1 % DDM)

Handling Advice: Avoid repeated freeze-thaw cycles.

Storage: -80 °C

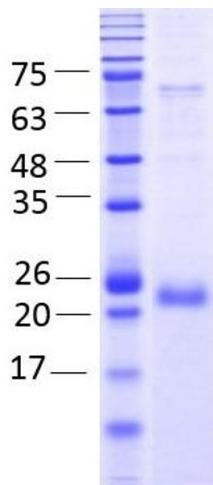
Storage Comment: Store at -80°C.

Expiry Date: Unlimited (if stored properly)

Images

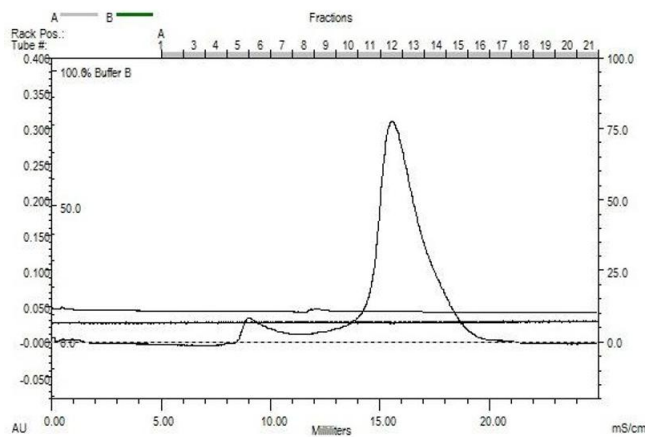


Image 1. „Crystallography Grade“ protein due to multi-step, protein-specific purification process



SDS-PAGE

Image 2. Emopamil Binding Protein (Sterol Isomerase) (EBP) AA 2- 230), fraction 12 - 13



Size-exclusion chromatography-High Pressure Liquid Chromatography

Image 3. Emopamil Binding Protein (Sterol Isomerase) (EBP) AA 2- 230), gel filtration Superose 6 fraction 12 - 13

Please check the [product details page](#) for more images. Overall 4 images are available for ABIN3100004.