

Datasheet for ABIN310622

**anti-MARVELD3 antibody (Middle Region)**[Go to Product page](#)**4** Images

## Overview

Quantity:	25 µL
Target:	MARVELD3
Binding Specificity:	Middle Region
Reactivity:	Human, Mouse, Dog, Cow, Guinea Pig, Pig, Rabbit, Rat
Host:	Rabbit
Clonality:	Polyclonal
Conjugate:	This MARVELD3 antibody is un-conjugated
Application:	Western Blotting (WB), Immunohistochemistry (IHC)

## Product Details

Immunogen:	The immunogen is a synthetic peptide directed towards the middle region of human MARVELD3
Sequence:	SYFVLAGFSA SFSSGGGFGN NYSPFEGTE LEQVRQLDQQ YTILRSPLIY
Predicted Reactivity:	Cow: 100%, Dog: 100%, Guinea Pig: 86%, Human: 100%, Mouse: 100%, Pig: 100%, Rabbit: 100%, Rat: 100%
Characteristics:	This is a rabbit polyclonal antibody against MARVELD3. It was validated on Western Blot and immunohistochemistry.
Purification:	Affinity Purified

## Target Details

Target:	MARVELD3
---------	----------

## Target Details

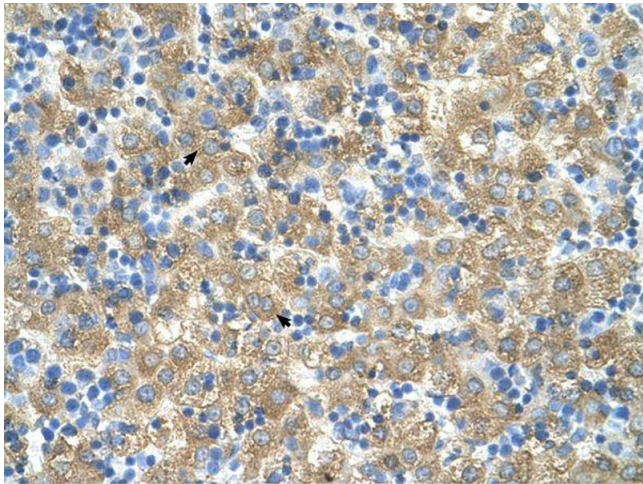
Alternative Name:	MARVELD3 ( <a href="#">MARVELD3 Products</a> )
Background:	The function remains unknown. Alias Symbols: FLJ32280, MARVD3, MRVLDC3 Protein Interaction Partner: UBC, Protein Size: 410
Molecular Weight:	46 kDa
Gene ID:	91862
NCBI Accession:	<a href="#">NM_001017967</a> , <a href="#">NP_001017967</a>
UniProt:	<a href="#">A8K820</a>
Pathways:	<a href="#">Cell-Cell Junction Organization</a>

## Application Details

Application Notes:	Optimal working dilutions should be determined experimentally by the investigator.
Comment:	Antigen size: 410 AA
Restrictions:	For Research Use only

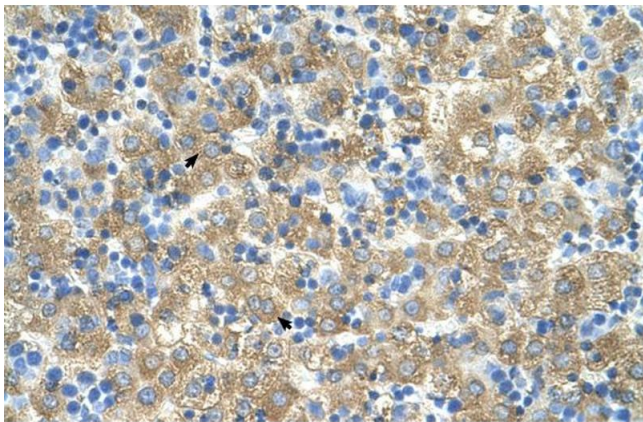
## Handling

Format:	Liquid
Concentration:	Lot specific
Buffer:	Liquid. Purified antibody supplied in 1x PBS buffer with 0.09 % (w/v) sodium azide and 2 % sucrose.
Preservative:	Sodium azide
Precaution of Use:	This product contains Sodium azide: a POISONOUS AND HAZARDOUS SUBSTANCE which should be handled by trained staff only.
Handling Advice:	Avoid repeated freeze-thaw cycles.
Storage:	-20 °C
Storage Comment:	For short term use, store at 2-8°C up to 1 week. For long term storage, store at -20°C in small aliquots to prevent freeze-thaw cycles.



Immunohistochemistry

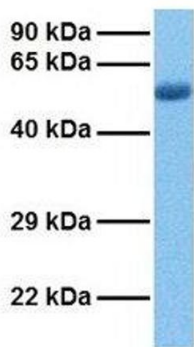
Image 1.



Immunohistochemistry

Image 2. Human Liver

MARVELD3



Western Blotting

Image 3. Host: Rabbit Target Name: MARVELD3 Sample  
Tissue: Human Lung Tumor Antibody Dilution: 1.0ug/ml

Please check the [product details page](#) for more images. Overall 4 images are available for ABIN310622.