



[Go to Product page](#)

Datasheet for ABIN3119627

## IgG3 Protein

### 1 Image

#### Overview

Quantity: 1 mg

Target: IgG3

Origin: Human

Source: Human

Protein Type: Native

#### Product Details

Cross-Reactivity (Details): Prepared from plasma shown to be non reactive for HBsAg, anti-HCV, anti-HBc, and negative for anti-HIV 1 & 2 by FDA approved tests.

Purity: >95 %

#### Target Details

Target: IgG3

Alternative Name: Immunoglobulin G3 ([IgG3 Products](#))

Target Type: Antibody

Background: IgG3

Molecular Weight: 170 kDa

#### Application Details

Application Notes: For use in: IsoC

## Application Details

Comment: Extinction Coefficient: 1.36

Restrictions: For Research Use only

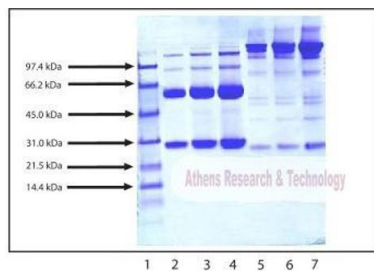
## Handling

Format: Liquid

Storage: 4 °C

Storage Comment: <= + 2 - 6 °C. Do NOT Freeze

## Images



### SDS-PAGE:

4 - 12% Bis-Tris NuPAGE gel

1. LMW Standard (BIO-RAD Cat. No. 161-0304)
2. IgG3 - 5 µg (reduced / heated)
3. IgG3 - 10 µg (reduced / heated)
4. IgG3 - 20 µg (reduced / heated)
5. IgG3 - 5 µg (non-reduced / no heat)
6. IgG3 - 10 µg (non-reduced / no heat)
7. IgG3 - 20 µg (non-reduced / no heat)

### SDS-PAGE

**Image 1.** Gel Scan of Immunoglobulin G3 (IgG3), Normal Human Plasma This information is representative of the product ART prepares, but is not lot specific.