



[Go to Product page](#)

Datasheet for ABIN3119632

Albumin, Human Plasma (HAS, rHSA)

1 Image

1 Publication

Overview

Quantity: 1 g

Target: Albumin (ALB)

Reactivity: Human

Host: Human

Antibody Type: Native

Product Details

Cross-Reactivity (Details): Prepared from plasma shown to be non reactive for HBsAg, anti-HCV, anti-HBc, and negative for anti-HIV 1 & 2 by FDA approved tests.

Purity: >95 %

Target Details

Target: Albumin (ALB)

Alternative Name: Albumin ([ALB Products](#))

Background: HAS, rHSA

Molecular Weight: 66 kDa

Application Details

Application Notes: For use in: WB, HPLC, ELISA

Comment: Extinction Coefficient: 0.58

Application Details

Restrictions: For Research Use only

Handling

Format: Lyophilized

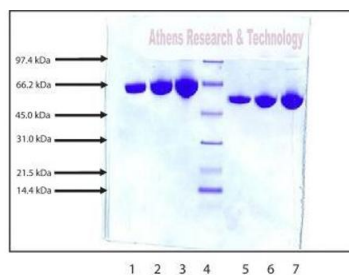
Storage: -20 °C

Storage Comment: -20°C

Publications

Product cited in: Ramadass, Ghebrehiwet, Kew: "Enhanced recognition of plasma proteins in a non-native state by complement C3b. A possible clearance mechanism for damaged proteins in blood." in: **Molecular immunology**, Vol. 64, Issue 1, pp. 55-62, (2015) ([PubMed](#)).

Images



SDS-PAGE:

4-12% Bis-Tris NuPAGE gel

1. Albumin - 5 µg (reduced / heated)
2. Albumin - 10 µg (reduced / heated)
3. Albumin - 20 µg (reduced / heated)
4. LMW Standard (BIO-RAD Cat. No. 161-0304)
5. Albumin - 5 µg (non-reduced / heated)
6. Albumin - 10 µg (non-reduced / heated)
7. Albumin - 20 µg (non-reduced / heated)

SDS-PAGE

Image 1. Gel Scan of Albumin, Human Plasma This information is representative of the product ART prepares, but is not lot specific.