

Datasheet for ABIN3119666

SERPING1 Protein

1 Image

1 Publication



[Go to Product page](#)

Overview

Quantity: 1 mg

Target: SERPING1

Origin: Human

Source: Human

Protein Type: Native

Product Details

Cross-Reactivity (Details): Prepared from plasma shown to be non reactive for HbsAG, anti-HCV, anti-HBc, and negative for anti-HIV 1 & 2 by FDA approved tests.

Purity: >95 %

Target Details

Target: SERPING1

Alternative Name: C-1 Esterase Inhibitor ([SERPING1 Products](#))

Background: SerpinG1, C1IN

Molecular Weight: 100 kDa

Pathways: [Complement System](#)

Application Details

Application Notes: For use in: SDS

Application Details

Comment: Extinction Coefficient: 0.4

Restrictions: For Research Use only

Handling

Format: Liquid

Storage: -80 °C

Storage Comment: -70°C or lower

Publications

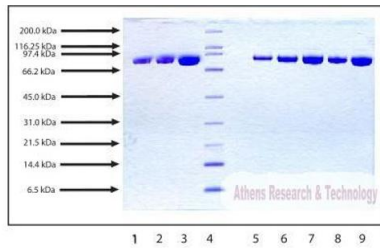
Product cited in: Kozlik, Sanda, Goldman: "Nano reversed phase versus nano hydrophilic interaction liquid chromatography on a chip in the analysis of hemopexin glycopeptides." in: **Journal of chromatography. A**, Vol. 1519, pp. 152-155, (2017) ([PubMed](#)).

Kozlik, Goldman, Sanda: "Study of structure-dependent chromatographic behavior of glycopeptides using reversed phase nanoLC." in: **Electrophoresis**, Vol. 38, Issue 17, pp. 2193-2199, (2017) ([PubMed](#)).

Sakamoto, Kim, Hara, Kamada, Caballero-Flores, Tolosano, Soares, Puente, Inohara, Núñez: "IL-22 Controls Iron-Dependent Nutritional Immunity Against Systemic Bacterial Infections." in: **Science immunology**, Vol. 2, Issue 8, (2017) ([PubMed](#)).

Aggarwal, Lam, Bolisetty, Carlisle, Traylor, Agarwal, Matalon: "Heme Attenuation Ameliorates Irritant Gas Inhalation-Induced Acute Lung Injury." in: **Antioxidants & redox signaling**, Vol. 24, Issue 2, pp. 99-112, (2016) ([PubMed](#)).

Mehta, Grijalva, Hama, Wagner, Navab, Fogelman, Reddy: "Apolipoprotein E-/- Mice Lacking Hemopexin Develop Increased Atherosclerosis via Mechanisms That Include Oxidative Stress and Altered Macrophage Function." in: **Arteriosclerosis, thrombosis, and vascular biology**, Vol. 36, Issue 6, pp. 1152-63, (2016) ([PubMed](#)).



SDS-PAGE:
4-12% Bis-Tris NuPAGE gel

1. C 1 Esterase Inhibitor - 2.5 µg (reduced / heated)
2. C 1 Esterase Inhibitor - 5 µg (reduced / heated)
3. C 1 Esterase Inhibitor - 10 µg (reduced / heated)
4. BRMW Standard (BIO-RAD Cat. No. 161-0317)
5. C 1 Esterase Inhibitor - 2.5 µg (non-reduced / heated)
6. C 1 Esterase Inhibitor - 5 µg (non-reduced / heated)
7. C 1 Esterase Inhibitor - 10 µg (non-reduced / heated)
8. C 1 Esterase Inhibitor - 5 µg (non-reduced / no heat)
9. C 1 Esterase Inhibitor - 10 µg (non-reduced / no heat)

SDS-PAGE

Image 1. Gel Scan of C1 Esterase Inhibitor, Human Plasma

This information is representative of the product ART prepares, but is not lot specific.