



Datasheet for ABIN3119708

IgD Protein



[Go to Product page](#)

1 Image

Overview

Quantity: 25 µg

Target: IgD

Origin: Human

Source: Human

Protein Type: Native

Product Details

Cross-Reactivity (Details): Prepared from plasma shown to be non reactive for HBsAg, anti-HCV, anti-HBc, and negative for anti-HIV 1 & 2 by FDA approved tests.

Purity: >95 %

Target Details

Target: IgD

Alternative Name: Immunoglobulin D ([IgD Products](#))

Target Type: Antibody

Background: IgD

Molecular Weight: 185 kDa

Application Details

Application Notes: For use in: IsoC

Application Details

Comment: Extinction Coefficient: 1.7

Restrictions: For Research Use only

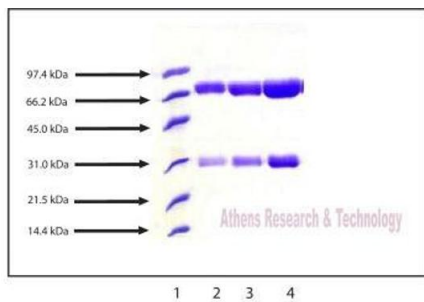
Handling

Format: Liquid

Storage: -80 °C

Storage Comment: -70°C or lower

Images



SDS-PAGE:

4 - 12% Bis-Tris NuPAGE gel

1. LMW Standard (BIO-RAD Cat. No. 161-0304)
2. IgD - 3 µg (reduced / heated)
3. IgD - 5 µg (reduced / heated)
4. IgD - 10 µg (reduced / heated)

SDS-PAGE

Image 1. Gel Scan of Immunoglobulin D (IgD), Human Plasma This information is representative of the product ART prepares, but is not lot specific.