

Datasheet for ABIN3119744

## IgM Protein

### 1 Image



[Go to Product page](#)

### Overview

Quantity:	1 mg
Target:	IgM
Origin:	Human
Source:	Human
Protein Type:	Native

### Product Details

Cross-Reactivity (Details):	Prepared from plasma shown to be non reactive for HBsAg, anti-HCV, anti-HBc, and negative for anti-HIV 1 & 2 by FDA approved tests.
Purity:	>95 %

### Target Details

Target:	IgM
Alternative Name:	Immunoglobulin M ( <a href="#">IgM Products</a> )
Target Type:	Antibody
Background:	IgM
Molecular Weight:	75 kDa

### Application Details

Application Notes:	For use in: IsoC
--------------------	------------------

## Application Details

Comment: Extinction Coefficient: 1.33

Restrictions: For Research Use only

## Handling

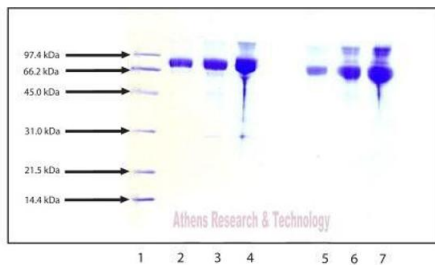
Format: Lyophilized

Buffer: 1.0 M acetic acid.

Storage: -20 °C

Storage Comment: -20°C

## Images



SDS-PAGE:

12% BIO RAD Tris-HCl gel

1. LMW Standard (BIO-RAD Cat. No. 161-0304)
2. IgM  $\mu$  - 5  $\mu$ g (reduced / heated)
3. IgM  $\mu$  - 10  $\mu$ g (reduced / heated)
4. IgM  $\mu$  - 20  $\mu$ g (reduced / heated)
5. IgM  $\mu$  - 5  $\mu$ g (non-reduced / no heat)
6. IgM  $\mu$  - 10  $\mu$ g (non-reduced / no heat)
7. IgM  $\mu$  - 20  $\mu$ g (non-reduced / no heat)

### SDS-PAGE

**Image 1.** Gel Scan of Immunoglobulin M, mu Chain, Human Plasma This information is representative of the product ART prepares, but is not lot specific.