



Datasheet for ABIN3119746
Kininogen (HMW) Protein



[Go to Product page](#)

1 Image

Overview

Quantity: 100 µg

Target: Kininogen (HMW)

Origin: Human

Source: Human

Protein Type: Native

Product Details

Cross-Reactivity (Details): Prepared from plasma shown to be non reactive for HbsAG, anti-HCV, anti-HBc, and negative for anti-HIV 1 & 2 by FDA approved tests.

Purity: >95 %

Target Details

Target: Kininogen (HMW)

Alternative Name: Kininogen, High Molecular Weight ([Kininogen \(HMW\) Products](#))

Background: KNG1, Enzyme, Coagulation Factor

Molecular Weight: 120 kDa

Application Details

Application Notes: For use in: SDS

Comment: Extinction Coefficient: 0.7

Application Details

Restrictions: For Research Use only

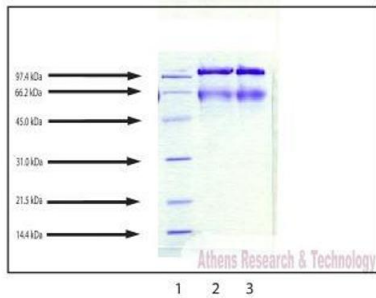
Handling

Format: Liquid

Storage: -80 °C

Storage Comment: -70°C or lower

Images



SDS-PAGE:

12% Tris Glycine gel

1. LMW Standard (BIO-RAD Cat. No. 161-0304)
2. Kininogen, HMW - 10 µg (reduced / heated)
3. Kininogen, HMW - 20 µg (reduced / heated)

SDS-PAGE

Image 1. Gel Scan of Kininogen, HMW, Human Plasma This information is representative of the product ART prepares, but is not lot specific.