



[Go to Product page](#)

Datasheet for ABIN3119747

LMW Kininogen Protein

1 Image

Overview

Quantity: 100 µg

Target: LMW Kininogen (LMWK)

Origin: Human

Source: Human

Protein Type: Native

Product Details

Cross-Reactivity (Details): Prepared from plasma shown to be non reactive for HBsAg, anti-HCV, anti-HBc, and negative for anti-HIV 1 & 2 by FDA approved tests.

Purity: >95 %

Target Details

Target: LMW Kininogen (LMWK)

Alternative Name: Kininogen, Low Molecular Weight ([LMWK Products](#))

Background: KNG1, Enzyme, Coagulation Factor, cysteine protease

Molecular Weight: 65 kDa

Application Details

Application Notes: For use in: SDS

Comment: Extinction Coefficient: 0.59

Application Details

Restrictions: For Research Use only

Handling

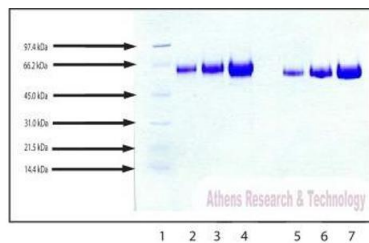
Format: Lyophilized

Buffer: 10 mM Na acetate, pH 5.5, with 200 mM NaCl.

Storage: -20 °C

Storage Comment: -20°C

Images



SDS-PAGE

Image 1. Gel Scan of Kininogen, LMW, Human Plasma This information is representative of the product ART prepares, but is not lot specific.

SDS-PAGE:

12% Tris Glycine gel

1. LMW Standard (BIO-RAD Cat. No. 161-0304)
2. Kininogen, LMW - 5 µg (reduced / heated)
3. Kininogen, LMW - 10 µg (reduced / heated)
4. Kininogen, LMW - 20 µg (reduced / heated)
5. Kininogen, LMW - 5 µg (non-reduced / no heat)
6. Kininogen, LMW - 10 µg (non-reduced / no heat)
7. Kininogen, LMW - 20 µg (non-reduced / no heat)