

Datasheet for ABIN3119792

Trypsin Protein**1** Image[Go to Product page](#)

Overview

Quantity:	100 µg
Target:	Trypsin
Origin:	Human
Source:	Human
Protein Type:	Native

Product Details

Cross-Reactivity (Details):	Prepared from tissue shown to be non reactive for HBsAg, anti-HCV, anti-HBc, and negative for anti-HIV 1 & 2 by FDA approved tests.
Purity:	>95 %

Target Details

Target:	Trypsin
Abstract:	Trypsin Products
Background:	Enzyme
Molecular Weight:	21,000-23,000

Application Details

Application Notes:	For use in: SDS
Comment:	Extinction Coefficient: 1.45

Application Details

Restrictions: For Research Use only

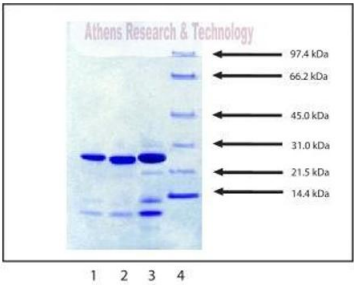
Handling

Format: Lyophilized

Storage: -20 °C

Storage Comment: -20°C

Images



SDS-PAGE:
4 - 12% Bis-Tris NuPAGE gel

1. Trypsin - 5 µg (reduced / heated)
2. Trypsin - 10 µg (reduced / heated)
3. Trypsin - 20 µg (reduced / heated)
4. LMW Standard (BIO-RAD Cat. No. 161-0304)

SDS-PAGE

Image 1. Gel Scan of Trypsin, Human Pancreas This information is representative of the product ART prepares, but is not lot specific.