

Datasheet for ABIN3121372

PD-1 Protein (AA 21-169) (His tag)**3** Images[Go to Product page](#)

Overview

Quantity:	1 mg
Target:	PD-1 (PDCD1)
Protein Characteristics:	AA 21-169
Origin:	Mouse
Source:	Escherichia coli (E. coli)
Protein Type:	Recombinant
Purification tag / Conjugate:	This PD-1 protein is labelled with His tag.
Application:	Western Blotting (WB), SDS-PAGE (SDS), ELISA, Crystallization (Crys)

Product Details

Sequence:	SGWLLEVPNG PWRSLTFYPA WLTVSEGAN TFCSLSNWS EDLMLNWNRL SPSNQTEKQA AFCNGLSQPV QDARFQIIQL PNRHDFHMN ILDTRRND SGIYLCGAISLH PKAKIEESPG AELVTERILE TSTRYPSPSP KPEGRFQGMH HHHHH
-----------	---

Characteristics:	<ul style="list-style-type: none">• Made in Germany - from design to production - by highly experienced protein experts.• Mouse Pdc1 Protein (raised in E. Coli) purified by multi-step, protein-specific process to ensure crystallization grade.• State-of-the-art algorithm used for plasmid design (Gene synthesis).
------------------	--

This protein is a made to order protein and will be made for the first time for your order. Our experts in the lab will ensure that you receive a correctly folded protein.

The big advantage of ordering our made-to-order proteins in comparison to ordering custom made proteins from other companies is that there is no financial obligation in case the protein cannot be expressed or purified.

Product Details

In the unlikely event that the protein cannot be expressed or purified we do not charge anything (other companies might charge you for any performed steps in the expression process for custom-made proteins, e.g. fees might apply for the expression plasmid, the first expression experiments or purification optimization).

When you order this made-to-order protein you will only pay upon receipt of the correctly folded protein. With no financial risk on your end you can rest assured that our experienced protein experts will do everything to make sure that you receive the protein you ordered.

The concentration of our recombinant proteins is measured using the absorbance at 280nm. The protein's absorbance will be measured in several dilutions and is measured against its specific reference buffer.

The concentration of the protein is calculated using its specific absorption coefficient. We use the ExPASy's protparam tool to determine the absorption coefficient of each protein.

Purification:	Two step purification of proteins expressed in bacterial culture: <ol style="list-style-type: none">1. In a first purification step, the protein is purified from the cleared cell lysate using three different His-tag capture materials: high yield, EDTA resistant, or DTT resistant. Eluate fractions are analyzed by SDS-PAGE.2. Protein containing fractions of the best purification are subjected to second purification step through size exclusion chromatography. Eluate fractions are analyzed by SDS-PAGE and Western blot.
Purity:	>95 % as determined by SDS PAGE, Size Exclusion Chromatography and Western Blot.
Sterility:	0.22 µm filtered
Endotoxin Level:	Endotoxin has not been removed. Please contact us if you require endotoxin removal.
Grade:	Crystallography grade

Target Details

Target:	PD-1 (PDCD1)
Alternative Name:	Pdcd1 (PDCD1 Products)
Background:	Inhibitory cell surface receptor involved in the regulation of T-cell function during immunity and tolerance. Upon ligand binding, inhibits T-cell effector functions in an antigen-specific manner. Possible cell death inducer, in association with other factors (By similarity). {ECO:0000250}.
Molecular Weight:	17.7 kDa Including tag.
UniProt:	Q02242

Target Details

Pathways: [Cancer Immune Checkpoints](#)

Application Details

Application Notes:	In addition to the applications listed above we expect the protein to work for functional studies as well. As the protein has not been tested for functional studies yet we cannot offer a guarantee though.
Comment:	Protein has not been tested for activity yet. In cases in which it is highly likely that the recombinant protein with the default tag will be insoluble our protein lab may suggest a higher molecular weight tag (e.g. GST-tag) instead to increase solubility. We will discuss all possible options with you in detail to assure that you receive your protein of interest.
Restrictions:	For Research Use only

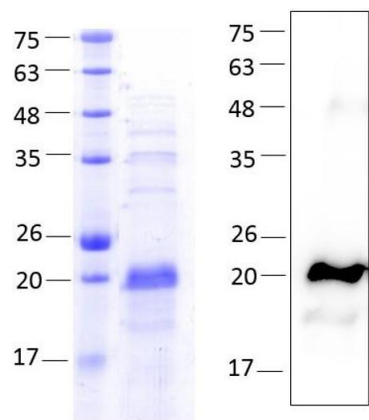
Handling

Format:	Liquid
Buffer:	20 mM Tris, pH 7.5, 500 mM NaCl
Handling Advice:	Avoid repeated freeze-thaw cycles.
Storage:	-80 °C
Storage Comment:	Store at -80°C.
Expiry Date:	Unlimited (if stored properly)

Images



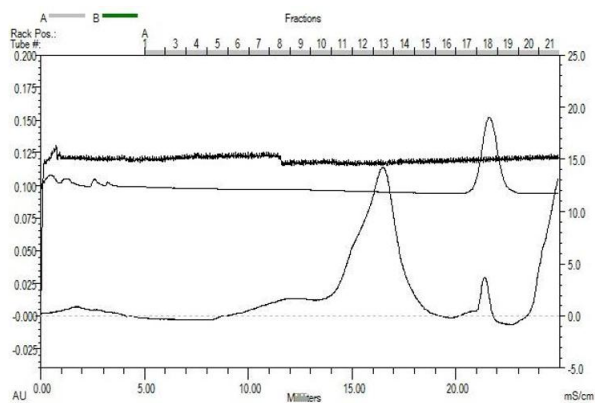
Image 1. „Crystallography Grade“ protein due to multi-step, protein-specific purification process



PDCD1 (AA 21 - 169),
fraction 12 - 14

Western Blotting

Image 2.



PDCD1 (AA 21 - 169), gel filtration Superdex 200,
fraction 12 - 14

Image 3.