

Datasheet for ABIN317504

## anti-Clusterin antibody (N-Term)

### 4 Images



[Go to Product page](#)

### Overview

Quantity:	0.1 mL
Target:	Clusterin (CLU)
Binding Specificity:	AA 1-333, N-Term
Reactivity:	Human
Host:	Mouse
Clonality:	Monoclonal
Conjugate:	This Clusterin antibody is un-conjugated
Application:	Western Blotting (WB), Immunohistochemistry (Paraffin-embedded Sections) (IHC (p)), Enzyme Immunoassay (EIA)

### Product Details

Immunogen:	Recombinant human Clusterin (1-333 aa) purified from E. coli.
Clone:	1A11
Isotype:	IgG1
Specificity:	The antibody recognizes Human Clusterin. Other species not tested.
Characteristics:	Synonyms: Clusterin, APOJ, CLI, KUB1, AAG4, NA1/NA2, SP-40, 40, Complement-associated protein SP-40, Complement cytolysis inhibitor, Testosterone-repressed prostate message 2, Ku70-binding protein 1, Aging-associated gene 4 protein
Purification:	Affinity Chromatography on Protein G

## Target Details

Target:	Clusterin (CLU)
Alternative Name:	Apolipoprotein J (Apo J) ( <a href="#">CLU Products</a> )
Background:	Clusterin has been implicated in numerous processes including active cell death, immune regulation, cell adhesion and morphological transformation. Clusterin (previously named SP-40) is a glycoprotein, 80 kDa comprising two distinct 40 kDa polypeptide chains. It shows marked similarity, both physicochemically and in immunohistological distribution, to the single chain, 80 kDa, Sprotein, an additional component of the SC5b-9 complex. Clusterin is a secreted glycoprotein of which the exact function remains a matter for speculation.Synonyms: 40, 40, AAG4, APOJ, Aging-associated gene 4 protein, CLI, Clusterin, Complement cytolysis inhibitor, Complement-associated protein SP-40, KUB1, Ku70-binding protein 1, NA1/NA2, SP-40, Testosterone-repressed prostate message 2
Gene ID:	1191
UniProt:	<a href="#">P10909</a>
Pathways:	<a href="#">Apoptosis</a> , <a href="#">Negative Regulation of intrinsic apoptotic Signaling</a>

## Application Details

Application Notes:	ELISA. Western blot (1/1,000-1/2,000). Immunohistochemistry on Paraffin Sections (1/100-1/200).  Other applications not tested.  Optimal dilutions are dependent on conditions and should be determined by the user.
Restrictions:	For Research Use only

## Handling

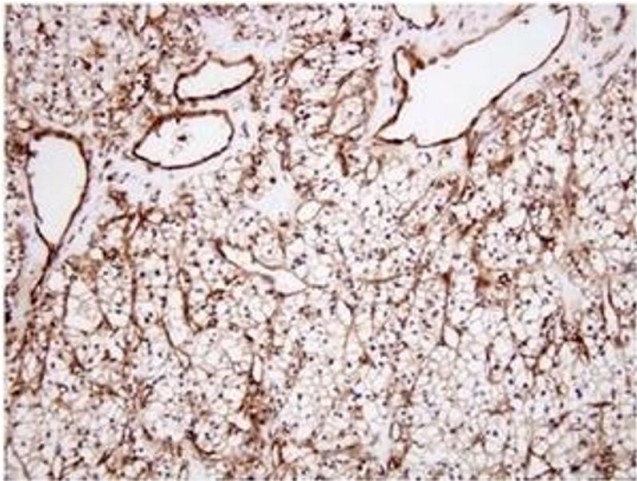
Format:	Liquid
Concentration:	1.0 mg/mL
Buffer:	PBS, pH 7.4, 0.09 % Sodium Azide
Preservative:	Sodium azide
Precaution of Use:	This product contains sodium azide: a POISONOUS AND HAZARDOUS SUBSTANCE which should be handled by trained staff only.
Storage:	4 °C/-20 °C
Storage Comment:	Store the antibody undiluted at 2-8 °C for one month or (in aliquots) at -20 °C for longer. Avoid

Handling

repeated freezing and thawing.  
Shelf life: one year from despatch.

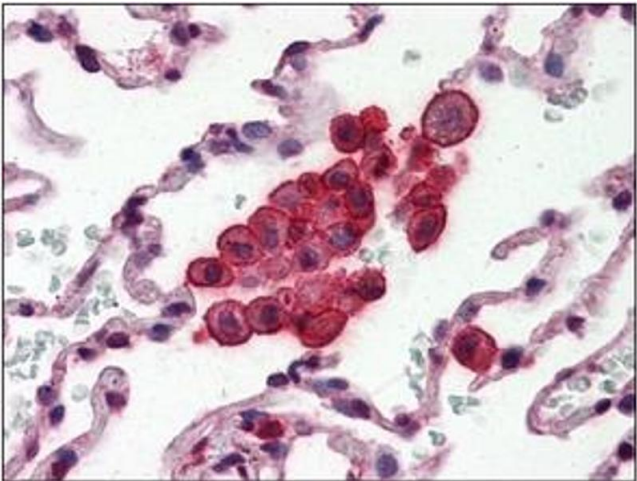
Expiry Date: 12 months

Images



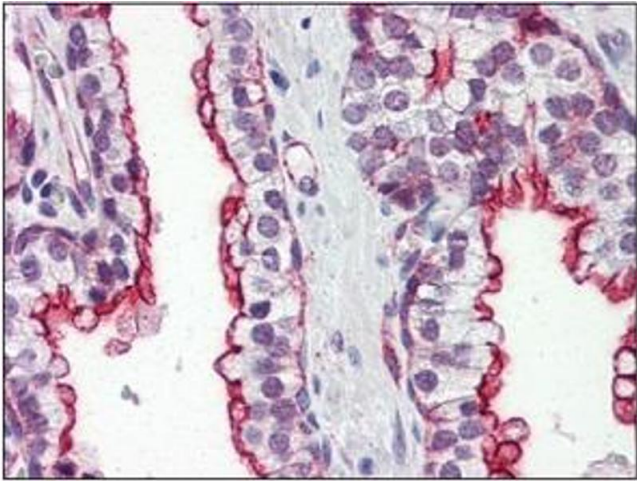
Immunohistochemistry

Image 1.



Immunohistochemistry

Image 2.



Immunohistochemistry

Image 3.

Please check the [product details page](#) for more images. Overall 4 images are available for ABIN317504.