

Datasheet for ABIN317552
anti-PPM1G antibody (AA 317-546)[Go to Product page](#)

2 Images

Overview

Quantity:	0.1 mL
Target:	PPM1G
Binding Specificity:	AA 317-546
Reactivity:	Human
Host:	Mouse
Clonality:	Monoclonal
Conjugate:	This PPM1G antibody is un-conjugated
Application:	Western Blotting (WB), Immunohistochemistry (Paraffin-embedded Sections) (IHC (p)), Enzyme Immunoassay (EIA)

Product Details

Immunogen:	Recombinant human PPM1G (317-546 aa) purified from E. coli
Clone:	K1G6
Isotype:	IgG1
Specificity:	The antibody recognizes human PPM1G. Other species not tested.
Characteristics:	Synonyms: Protein phosphatase 2C isoform gamma, Protein phosphatase 1C, PPM1C, PP2C-gamma, Protein phosphatase magnesium-dependent 1 gamma
Purification:	Protein-G affinity chromatography

Target Details

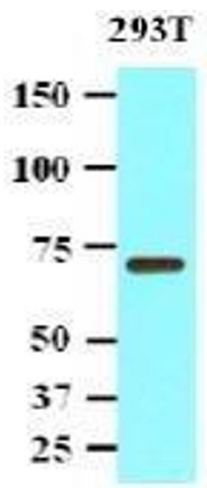
Target:	PPM1G
Alternative Name:	Protein Phosphatase 1G / PPM1G (PPM1G Products)
Background:	PPM1G (Protein phosphatase 1G) is a member of the PP2C family of Serine/threonine protein phosphatases. PP2C family members are known to be negative regulators of cell stress response pathways. The human Ser/Thr phosphatase PPM1G promotes spliceosome assembly. This phosphatase is found to be responsible for the dephosphorylation of Pre-mRNA splicing factors, which is important for the formation of functional spliceosome. Synonyms: PP2C-gamma, PPM1C, Protein phosphatase 1C, Protein phosphatase 2C isoform gamma, Protein phosphatase magnesium-dependent 1 gamma
Gene ID:	5496
UniProt:	O15355

Application Details

Application Notes:	ELISA. Western blot (1: 1,000 - 1: 2,000). Immunohistochemistry on paraffin sections (1: 50 - 1: 100). Other applications not tested. Optimal dilutions are dependent on conditions and should be determined by the user.
Restrictions:	For Research Use only

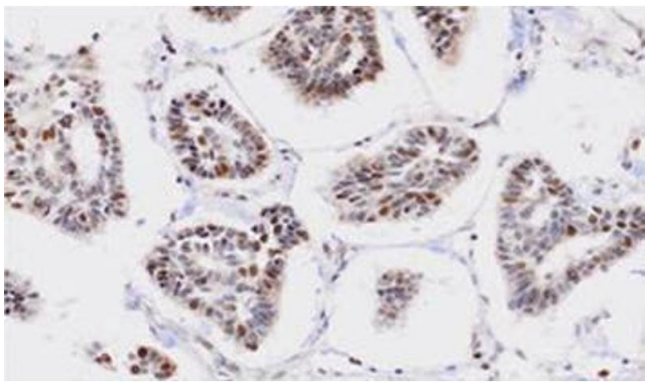
Handling

Format:	Liquid
Concentration:	1.0 mg/mL
Buffer:	PBS, pH 7.4, containing 10 % glycerol and 0.01 % sodium azide
Preservative:	Sodium azide
Precaution of Use:	This product contains sodium azide: a POISONOUS AND HAZARDOUS SUBSTANCE which should be handled by trained staff only.
Storage:	4 °C/-20 °C
Storage Comment:	Store the antibody undiluted at 2-8 °C for one month or (in aliquots) at -20 °C for longer. Avoid repeated freezing and thawing. Shelf life: one year from despatch.
Expiry Date:	12 months



Western Blotting

Image 1.



Immunohistochemistry

Image 2.