

Datasheet for ABIN317574
anti-UBE2L6 antibody (N-Term)[Go to Product page](#)

4 Images

Overview

Quantity:	0.1 mL
Target:	UBE2L6
Binding Specificity:	AA 1-152, N-Term
Reactivity:	Human
Host:	Mouse
Clonality:	Monoclonal
Conjugate:	This UBE2L6 antibody is un-conjugated
Application:	Western Blotting (WB), Immunohistochemistry (Paraffin-embedded Sections) (IHC (p)), Enzyme Immunoassay (EIA)

Product Details

Immunogen:	Recombinant human UBE2L6 (1-152 aa) purified from E. coli
Clone:	K1H3
Isotype:	IgG2b
Specificity:	The antibody recognizes human UBE2L6. Other species not tested.
Characteristics:	Synonyms: Ubiquitin/ISG15-conjugating enzyme E2 L6, Ubiquitin-protein ligase L6, Ubiquitin carrierprotein L6, UBCH8, Retinoic acid-induced gene B protein
Purification:	Protein-G affinity chromatography

Target Details

Target:	UBE2L6
Alternative Name:	UBE2L6 / RIG-B (UBE2L6 Products)
Background:	<p>Ubiquitin-conjugating enzyme E2L6 (UBE2L6), also known as Ubch8, is a member of the E2 ubiquitin-conjugating enzyme family. The modification of proteins with ubiquitin is an important cellular mechanism for targeting abnormal or short-lived proteins for degradation.</p> <p>Ubiquitination of a protein substrate requires the concerted action of 3 classes of enzymes: E1 ubiquitin-activating enzymes, E2 ubiquitin-conjugating enzymes, and E3 ubiquitin protein ligases. The E2 ubiquitin-conjugating enzyme is highly similar in primary structure to the enzyme encoded by UBE2L3 gene. Synonyms: Retinoic acid-induced gene B protein, UBCH8, Ubiquitin carrier protein L6, Ubiquitin-protein ligase L6, Ubiquitin/ISG15-conjugating enzyme E2 L6</p>
Gene ID:	9246
UniProt:	O14933

Application Details

Application Notes:	<p>ELISA. Western blot (1: 1,000 - 1: 3,000), recommended starting dilution is 1: 2,000.</p> <p>Immunohistochemistry on Paraffin embedded tissue (1: 50 - 1: 100).</p> <p>Other applications not tested.</p> <p>Optimal dilutions are dependent on conditions and should be determined by the user.</p>
Restrictions:	For Research Use only

Handling

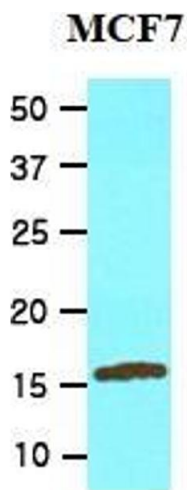
Format:	Liquid
Concentration:	1.0 mg/mL
Buffer:	PBS, pH 7.4, containing 0.09 % sodium azide
Preservative:	Sodium azide
Precaution of Use:	This product contains sodium azide: a POISONOUS AND HAZARDOUS SUBSTANCE which should be handled by trained staff only.
Storage:	4 °C/-20 °C
Storage Comment:	Store the antibody undiluted at 2-8 °C for one month or (in aliquots) at -20 °C for longer. Avoid repeated freezing and thawing.

Handling

Shelf life: one year from despatch.

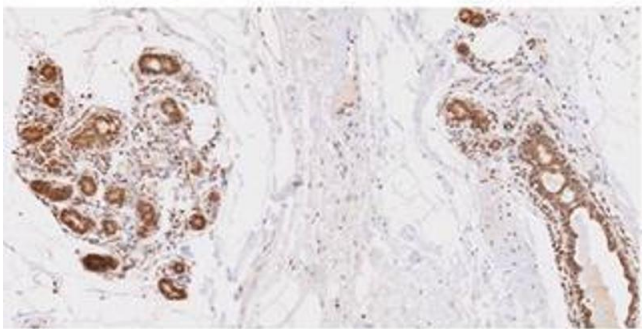
Expiry Date: 12 months

Images



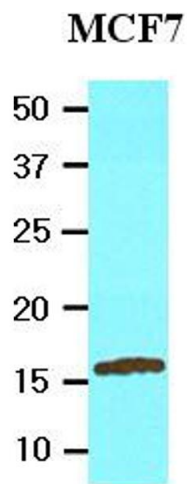
Western Blotting

Image 1.



Immunohistochemistry

Image 2.



Western Blotting

Image 3.

Please check the [product details page](#) for more images. Overall 4 images are available for ABIN317574.