

Datasheet for ABIN317639 **anti-FZD10 antibody**



[Go to Product page](#)

1 Image

Overview

Quantity:	0.1 mg
Target:	FZD10
Reactivity:	Human, Mouse
Host:	Rabbit
Clonality:	Polyclonal
Conjugate:	This FZD10 antibody is un-conjugated
Application:	Western Blotting (WB), Immunofluorescence (IF), Immunohistochemistry (Paraffin-embedded Sections) (IHC (p)), Enzyme Immunoassay (EIA)

Product Details

Specificity:	This antibody detects endogenous levels of Frizzled-10 protein.(region surrounding Leu164)
Purification:	Affinity Chromatography using epitope-specific immunogen.

Target Details

Target:	FZD10
Alternative Name:	CD350 / FZD10 / Frizzled-10 (FZD10 Products)
Background:	This gene is a member of the frizzled gene family. Members of this family encode 7-transmembrane domain proteins that are receptors for the Wingless type MMTV integration site family of signaling proteins. Most frizzled receptors are coupled to the beta-catenin canonical signaling pathway. Using array analysis, expression of this intronless gene is significantly up-regulated in two cases of primary colon cancer. Frizzled 10 is expressed during

Target Details

	development in embryonic limbs, neural tube, and central nervous system. It has been reported to be expressed in brain, embryo, kidney, liver, lung and pancreas.Synonyms: Fz-10, FzE7, hFz10
Molecular Weight:	approx. 60 kDa
Gene ID:	11211
NCBI Accession:	NP_009128
UniProt:	Q9ULW2
Pathways:	WNT Signaling

Application Details

Application Notes:	ELISA: 1/5000-1/10000. Western Blot: 1/500-1/1000. Immunofluorescence: 1/50-1/200. Immunohistochemistry: 1/50approx. 1/200. Other applications not tested. Optimal dilutions are dependent on conditions and should be determined by the user.
Restrictions:	For Research Use only

Handling

Concentration:	1.0 mg/mL
Buffer:	Phosphate buffered saline (PBS), pH ~7.2 containing 0.05 % Sodium Azide as preservative.
Preservative:	Sodium azide
Precaution of Use:	This product contains sodium azide: a POISONOUS AND HAZARDOUS SUBSTANCE which should be handled by trained staff only.
Handling Advice:	Avoid repeated freezing and thawing.
Storage:	4 °C/-20 °C
Storage Comment:	Store the antibody undiluted at 2-8 °C for one month or (in aliquots) at -20 °C for longer.

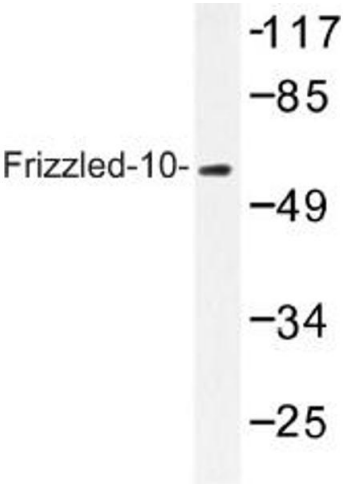


Image 1.