



[Go to Product page](#)

Datasheet for ABIN317656  
**anti-NPY1R antibody**

1 Image

### Overview

Quantity:	0.1 mg
Target:	NPY1R
Reactivity:	Human, Rat, Mouse
Host:	Rabbit
Clonality:	Polyclonal
Conjugate:	This NPY1R antibody is un-conjugated
Application:	Western Blotting (WB), Immunofluorescence (IF)

### Product Details

Specificity:	This antibody detects endogenous levels of Neuropeptide Y Receptor 1 (NPY1-R) protein.(region surrounding Arg254)
Cross-Reactivity (Details):	Species reactivity (tested):Human, Mouse and Rat.
Purification:	Affinity Chromatography using epitope-specific immunogen

### Target Details

Target:	NPY1R
Alternative Name:	Neuropeptide Y Receptor 1 ( <a href="#">NPY1R Products</a> )
Background:	Neuropeptide Y (NPY) is one of the most abundant neuropeptides in the mammalian nervous system and exhibits a diverse range of important physiologic activities, including effects on psychomotor activity, food intake, regulation of central endocrine secretion, and potent vasoactive effects on the cardiovascular system. There are two major subtypes of NPY (Y1 and

## Target Details

---

Y2). The NPY Y1 receptors have been identified in a variety of tissues, including brain, spleen, small intestine, kidney, testis, placenta, breast, colon, ganglion, heart, and aortic smooth muscle. The Y2 receptor is found mainly in the central nervous system. NPY receptors are a member of the G protein-coupled receptor superfamily. Synonyms: NPYR, NPYY1, Neuropeptide Y receptor 1

Molecular Weight: approx. 48 kDa

Gene ID: 4886

NCBI Accession: [NP\\_000900](#)

UniProt: [P25929](#)

Pathways: [Feeding Behaviour](#)

## Application Details

---

Application Notes: ELISA: 1/1000-1/5000. Western Blot: 1/500-1/1000. Immunofluorescence: 1/50-1/200.  
Other applications not tested.  
Optimal dilutions are dependent on conditions and should be determined by the user.

Restrictions: For Research Use only

## Handling

---

Concentration: 1.0 mg/mL

Buffer: Phosphate buffered saline (PBS), pH ~7.2, 0.05 % Sodium Azide

Preservative: Sodium azide

Precaution of Use: This product contains sodium azide: a POISONOUS AND HAZARDOUS SUBSTANCE which should be handled by trained staff only.

Handling Advice: Avoid repeated freezing and thawing.

Storage: 4 °C/-20 °C

Storage Comment: Store undiluted at 2-8 °C for one month or (in aliquots) at -20 °C for longer.

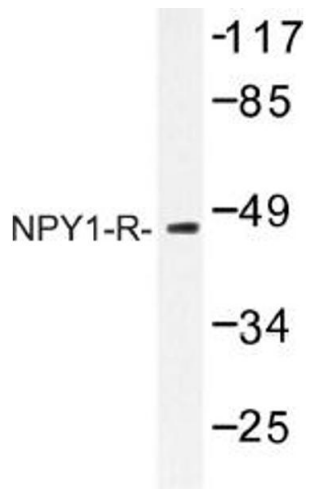


Image 1.