



Datasheet for ABIN317693 anti-GPR150 antibody



[Go to Product page](#)

1 Image

Overview

Quantity:	0.1 mg
Target:	GPR150
Reactivity:	Human
Host:	Rabbit
Clonality:	Polyclonal
Conjugate:	This GPR150 antibody is un-conjugated
Application:	Western Blotting (WB), Immunofluorescence (IF), Immunohistochemistry (Paraffin-embedded Sections) (IHC (p)), Enzyme Immunoassay (EIA)

Product Details

Specificity:	GPR150 antibody detects endogenous levels of GPR150 protein.(region surrounding Gln391)
Cross-Reactivity (Details):	Species reactivity (tested):Human.
Purification:	Affinity-chromatography using epitope-specific immunogen.

Target Details

Target:	GPR150
Alternative Name:	GPR150 (GPR150 Products)
Background:	G protein-coupled receptors (GPCRs), also designated seven transmembrane (7TM) receptors and heptahelical receptors, are a protein family which interact with G proteins (heterotrimeric GTPases) to synthesize intracellular second messengers such as diacylglycerol, cyclic AMP, inositol phosphates and calcium ions. Their diverse biological functions range from vision and

Target Details

olfaction to neuronal and endocrine signaling and are involved in many pathological conditions. G protein receptor 128 (GPR128), a member of the secretin family of GPCRs with a GPS domain in its N-terminal domain, may mediate signaling processes to the interior of the cell via activation of G proteins. GPR128 represents an allopeptide which may be involved in T cell mediated transplant rejection as it is able to stimulate 2.102 T cells. Synonyms: G-protein coupled receptor 150

Gene ID: 285601

NCBI Accession: [NP_954713](#)

UniProt: [Q8NGU9](#)

Application Details

Application Notes: ELISA: 1/5000 approx. 1/20000. Western Blot: 1/500 approx. 1/1000. Immunofluorescence: 1/50-1/200. Immunohistochemistry: 1/50-1/200.
Other applications not tested.
Optimal dilutions are dependent on conditions and should be determined by the user.

Restrictions: For Research Use only

Handling

Concentration: 1.0 mg/mL

Buffer: Phosphate buffered saline (PBS), pH ~7.2 containing 0.05 % Sodium Azide as preservative.

Preservative: Sodium azide

Precaution of Use: This product contains sodium azide: a POISONOUS AND HAZARDOUS SUBSTANCE which should be handled by trained staff only.

Handling Advice: Avoid repeated freezing and thawing.

Storage: 4 °C/-20 °C

Storage Comment: Store the antibody undiluted at 2-8 °C for one month or (in aliquots) at -20 °C for longer.

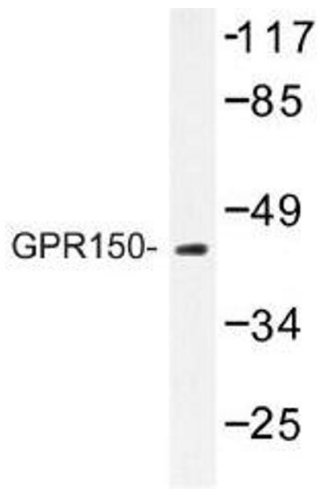


Image 1.