

Datasheet for ABIN317698
anti-PTH1R antibody



[Go to Product page](#)

2 Images

Overview

Quantity:	0.1 mg
Target:	PTH1R
Reactivity:	Human, Rat, Mouse
Host:	Rabbit
Clonality:	Polyclonal
Conjugate:	This PTH1R antibody is un-conjugated
Application:	Western Blotting (WB), Immunofluorescence (IF), Immunohistochemistry (Paraffin-embedded Sections) (IHC (p)), Enzyme Immunoassay (EIA)

Product Details

Specificity:	This antibody detects endogenous levels of PTH/PTHrP-R protein.(region surrounding Leu187)
Cross-Reactivity (Details):	Species reactivity (tested):Human, Mouse and Rat.
Purification:	Affinity Chromatography using epitope-specific immunogen

Target Details

Target:	PTH1R
Alternative Name:	PTH Receptor 1 (PTH1R Products)
Background:	Parathyroid Hormone (PTH), which is also designated parathyrin, is an 84 amino acid single chain peptide that functions to regulate calcium metabolism by raising blood levels of calcium through various mechanisms. PTH stimulates bone formation to increase bone mass and strength in rats and humans. Within the PTH molecule, the essential activity is associated with

Target Details

the first 34 amino acids at the amino-terminus of the molecule. The gene encoding PTH maps to human chromosome 11p15.3-p15.1. Parathyroid hormone-related protein (PTH-rP) is an autocrine factor that is structurally related to PTH yet, unlike PTH, which is synthesized only by the parathyroid cells, PTH-rP is synthesized by several cell types. PTH-rP regulates endochondral bone development and epithelial-mesenchymal interactions during the formation of the mammary glands and teeth. Isolated from the culture medium of a human lung cancer cell line, PTH-rP produces PTH-like effects that are characterized as humoral hypercalcemia of malignancy. Synonyms: PTH/PTHrP type I receptor, PTH1R, PTHR, PTHR1, Parathyroid hormone 1 receptor, Parathyroid hormone/parathyroid hormone-related peptide receptor

Molecular Weight: approx. 52 kDa

Gene ID: 5745

NCBI Accession: [NP_000307](#)

UniProt: [Q03431](#)

Pathways: [Regulation of Carbohydrate Metabolic Process](#)

Application Details

Application Notes: ELISA: 1/10000approx. 1/20000. Western Blot: 1/500approx. 1/1000. Immunohistochemistry: 1/50approx. 1/200. Immunofluorescence: 1/50approx. 1/200.
Other applications not tested.
Optimal dilutions are dependent on conditions and should be determined by the user.

Restrictions: For Research Use only

Handling

Concentration: 1.0 mg/mL

Buffer: Phosphate buffered saline (PBS), pH ~7.2, 0.05 % Sodium Azide

Preservative: Sodium azide

Precaution of Use: This product contains sodium azide: a POISONOUS AND HAZARDOUS SUBSTANCE which should be handled by trained staff only.

Handling Advice: Avoid repeated freezing and thawing.

Storage: 4 °C/-20 °C

Storage Comment: Store undiluted at 2-8 °C for one month or (in aliquots) at -20 °C for longer.

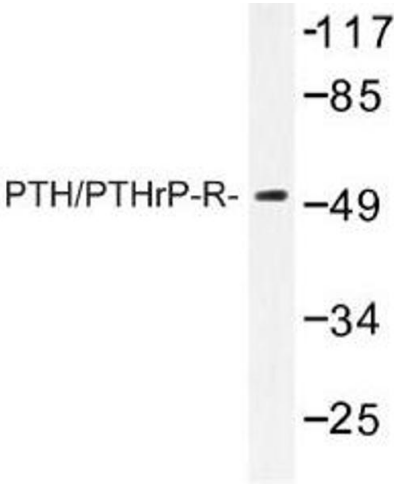


Image 1.

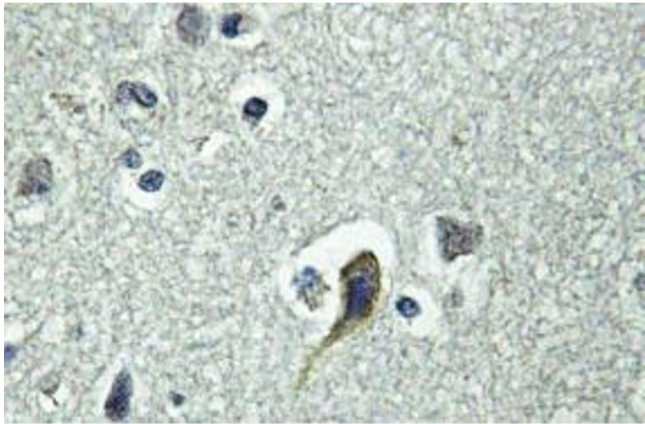


Image 2.