

Datasheet for ABIN317724

anti-LAMB2 antibody**2** Images[Go to Product page](#)

Overview

Quantity:	0.1 mg
Target:	LAMB2
Reactivity:	Human, Mouse, Rat
Host:	Rabbit
Clonality:	Polyclonal
Conjugate:	This LAMB2 antibody is un-conjugated
Application:	Western Blotting (WB), Immunohistochemistry (Paraffin-embedded Sections) (IHC (p)), Enzyme Immunoassay (EIA)

Product Details

Specificity:	This antibody detects endogenous levels of Laminin beta-2 protein. (region surrounding Cys91)
Cross-Reactivity (Details):	Species reactivity (expected):Mouse and Rat. Species reactivity (tested):Human.
Purification:	Affinity Chromatography using epitope-specific immunogen

Target Details

Target:	LAMB2
Alternative Name:	Laminin beta-2 (LAMB2 Products)
Background:	The Laminins comprise a growing family of disulfide-linked heterotrimers consisting of three genetically distinct polypeptide chains, designated alpha, beta and gamma. A major component of the basal lamina, Laminins play a crucial role in providing a scaffolding upon which tissues

Target Details

are assembled and which serves as a physical barrier separating specialized tissues. During embryogenesis and early development, cells migrate along basement membranes, which are required for the polarization of cells. The beta-2 laminin chain plays a role in melanoma spread, promoting tumor migration along the abluminal surface of vessel, a phenomenon which has been termed extra-vascular migratory metastasis. Synonyms: LAMB2, LAMS, Laminin B1s chain, Laminin-11 subunit beta, Laminin-14 subunit beta, Laminin-15 subunit beta, Laminin-3 subunit beta, Laminin-4 subunit beta, Laminin-7 subunit beta, Laminin-9 subunit beta, S-laminin

Molecular Weight: approx. 210 kDa

Gene ID: 3913

NCBI Accession: [NP_002283](#)

UniProt: [P55268](#)

Pathways: [Skeletal Muscle Fiber Development](#)

Application Details

Application Notes: ELISA: 1/5000-1/10000. Western Blot: 1/500-1/1000. Immunohistochemistry: 1/50-1/200.
Other applications not tested.
Optimal dilutions are dependent on conditions and should be determined by the user.

Restrictions: For Research Use only

Handling

Concentration: 1.0 mg/mL

Buffer: Phosphate buffered saline (PBS), pH 7.2., 0.05 % Sodium Azide

Preservative: Sodium azide

Precaution of Use: This product contains sodium azide: a POISONOUS AND HAZARDOUS SUBSTANCE which should be handled by trained staff only.

Handling Advice: Avoid repeated freezing and thawing.

Storage: 4 °C/-20 °C

Storage Comment: Store undiluted at 2-8 °C for one month or (in aliquots) at -20 °C for longer.

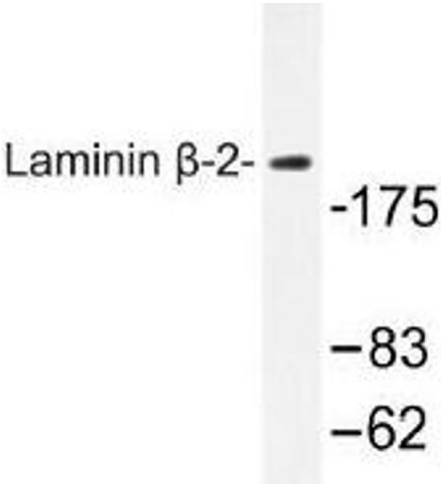


Image 1.

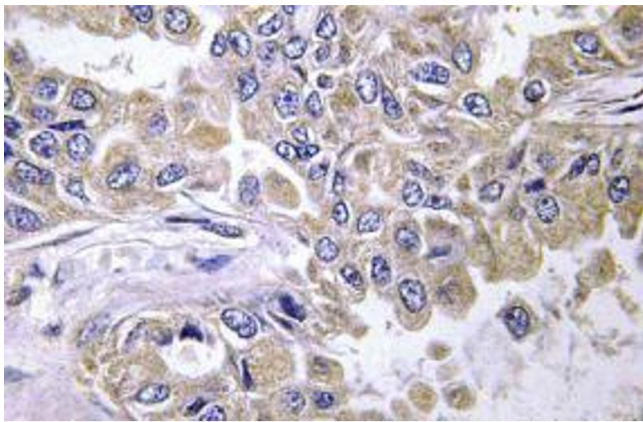


Image 2.