

Datasheet for ABIN317728

anti-HTR5B antibody**1** Image[Go to Product page](#)

Overview

Quantity:	0.1 mg
Target:	HTR5B
Reactivity:	Mouse, Rat
Host:	Rabbit
Clonality:	Polyclonal
Conjugate:	This HTR5B antibody is un-conjugated
Application:	Western Blotting (WB), Immunofluorescence (IF), Enzyme Immunoassay (EIA)

Product Details

Specificity:	This antibody detects endogenous levels of SR-5B protein.(region surrounding Val300)
Purification:	Affinity Chromatography using epitope-specific immunogen

Target Details

Target:	HTR5B
Alternative Name:	Serotonin Receptor 5B (HTR5B) (HTR5B Products)
Background:	SR-5B, also designated 5-hydroxytryptamine (serotonin) receptor 5B (5-HT5B) and G protein-coupled receptor 134 (GPR134), is a receptor for the monoamine ligand serotonin (5-hydroxytryptamine, 5-HT). Serotonin is a neurotransmitter derived from serotonergic neurons in the central nervous system and enterochromaffin cells in the gastrointestinal tract. Serotonin actions are mediated by receptors that influence the biochemistry of depression, anxiety, sexuality and appetite. Rat SR-5B is present in serotonergic neurons in dorsal raphe (DR) and

Target Details

central superior nucleus (CS, median raphe nucleus). DR cell bodies showing SR-5B mRNA expression are abundant in the medial portions of the nucleus. CS coexpression of SR-5B receptor mRNA with serotonin transporter mRNA is high in the intermediate portions of the nucleus. Serotonin receptors include SR-1-7 (5-HT1-7). Subtypes within the SR-1 group include SR-1A, -1B, -1D, -1E and -1F. Subtypes within the SR-2 group include SR-2A, -2B and -2C. Subtypes within the SR-5 group include SR-5A and -5B. SR receptors can couple to G proteins that act on either adenylate cyclase or phospholipase C (PLC). The SR-3 class of receptors are ion channels. Synonyms: 5-HT-5B, 5-HT5B, 5-hydroxytryptamine receptor 5B, 5HT5B, MR22

Molecular Weight: approx. 38 kDa

Gene ID: 79247

NCBI Accession: [XP_001055046](#)

UniProt: [P35365](#)

Application Details

Application Notes: ELISA: 1: 10000 approx. 1: 20000. WB: 1: 500 approx. 1: 1000.
Other applications not tested.
Optimal dilutions are dependent on conditions and should be determined by the user.

Restrictions: For Research Use only

Handling

Concentration: 1.0 mg/mL

Buffer: Phosphate buffered saline (PBS), pH ~7.2 with 0.05 % Sodium Azide as preservative

Preservative: Sodium azide

Precaution of Use: This product contains sodium azide: a POISONOUS AND HAZARDOUS SUBSTANCE which should be handled by trained staff only.

Handling Advice: Avoid repeated freezing and thawing.

Storage: 4 °C/-20 °C

Storage Comment: Store the antibody undiluted at 2-8 °C for one month or (in aliquots) at -20 °C for longer.

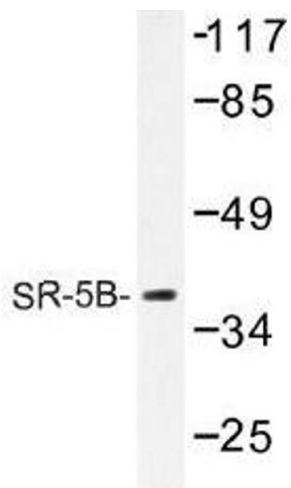


Image 1.