



[Go to Product page](#)

Datasheet for ABIN317732
anti-CasLTR2 antibody

1 Image

Overview

Quantity:	0.1 mg
Target:	CasLTR2 (CYSLTR2)
Reactivity:	Human
Host:	Rabbit
Clonality:	Polyclonal
Conjugate:	This CasLTR2 antibody is un-conjugated
Application:	Western Blotting (WB), Immunofluorescence (IF), Enzyme Immunoassay (EIA)

Product Details

Specificity:	This antibody detects endogenous levels of CYSLTR2 protein(region surrounding His324).
Cross-Reactivity (Details):	Species reactivity (tested):Human.
Purification:	Affinity-chromatography

Target Details

Target:	CasLTR2 (CYSLTR2)
Alternative Name:	CYSLTR2 (CYSLTR2 Products)
Background:	Cysteinyl leukotriene (CysLTs) induce intracellular calcium mobilization through the binding of two distinct seven-transmembrane, G protein-coupled receptors, designated CysLT1 Receptor and CysLT2 Receptor, to induce potent bronchoconstriction. Airway smooth muscle and macrophages express both receptor types, and additionally monocytes and eosinophils express CysLT1 Receptor, while cardiac Purkinje cells, adrenal medulla, peripheral blood

Target Details

leukocytes and brain also utilize CysLT2 Receptor. The effects of the CysLT Receptors can be blocked by antagonists, indicating a therapeutic mechanism for the treatment of asthma and allergies. Synonyms: CYSLT2, CysLTR2, Cysteinyl leukotriene receptor 2, G-protein coupled receptor GPCR21, G-protein coupled receptor HG57, HG57, HPN321, hGPCR21

Molecular Weight: approx. 40 kDa

Gene ID: 57105

NCBI Accession: [NP_065110](#)

UniProt: [Q9NS75](#)

Application Details

Application Notes: ELISA: 1: 40000 approx. 1: 60000. WB: 1: 500 approx. 1: 1000.
Other applications not tested.
Optimal dilutions are dependent on conditions and should be determined by the user.

Restrictions: For Research Use only

Handling

Concentration: 1,0 mg/mL

Buffer: Phosphate buffered saline (PBS), pH 7.2, 0.05 % Sodium azide

Preservative: Sodium azide

Precaution of Use: This product contains sodium azide: a POISONOUS AND HAZARDOUS SUBSTANCE which should be handled by trained staff only.

Handling Advice: Avoid repeated freezing and thawing.

Storage: 4 °C/-20 °C

Storage Comment: Store the antibody undiluted at 2-8 °C for one month or (in aliquots) at -20 °C for longer.

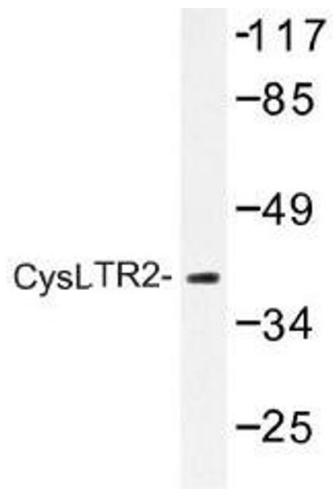


Image 1.