

Datasheet for ABIN317830
anti-DNAJB11 antibody[Go to Product page](#)

2 Images

Overview

Quantity:	0.1 mg
Target:	DNAJB11
Reactivity:	Human, Mouse, Rat
Host:	Rabbit
Clonality:	Polyclonal
Conjugate:	This DNAJB11 antibody is un-conjugated
Application:	Western Blotting (WB), Immunohistochemistry (Paraffin-embedded Sections) (IHC (p)), Enzyme Immunoassay (EIA)

Product Details

Specificity:	ERdj3 antibody detects endogenous levels of ERdj3 protein.(region surrounding Lys66)
Purification:	Affinity chromatography

Target Details

Target:	DNAJB11
Alternative Name:	DNAJB11 (DNAJB11 Products)
Background:	Members of the heat shock protein 40 (HSP 40) family of proteins all contain a highly conserved J domain that associates with HSP 70 and regulates the function of HSP 70 by activating its adenosine triphosphatase activity. ERdj3, an HSP 40 chaperone, is expressed in the ER lumen, where it interacts with BiP, a molecule involved in retrotranslocating proteins out of the ER. ERdj3 also associates with several other protein substrates, including unfolded light

Target Details

chains, a nonsecreted Ig light chain mutant and a VSV-G ts045 mutant. Shiga toxin (Stx) is a bacterial tool that enzymatically inactivates the 28S rRNA, inhibiting protein synthesis of infected cells. Stx also interacts with ERdj3 and Sec 61 to form a complex through which proteins are retrotranslocated to the cytoplasm. ERdj3 may play a role in the ER quality control system. Synonyms: APOBEC1-binding protein 2, DnaJ homolog subfamily B member 11, EDJ, ER-associated DNAJ, ER-associated Hsp40 co-chaperone, ER-associated dnaJ protein 3, ERJ3, ERdj3, ERj3p, HEDJ, PSEC0121, PWP1-interacting protein 4, hDj9

Molecular Weight: approx. 40 kDa

Gene ID: 51726

NCBI Accession: [NP_057390](#)

UniProt: [Q9UBS4](#)

Pathways: [ER-Nucleus Signaling](#)

Application Details

Application Notes: ELISA: 1: 20000 approx. 1: 40000. WB: 1: 500 approx. 1: 1000. IHC: 1: 50 approx. 1: 200.
Other applications not tested.
Optimal dilutions are dependent on conditions and should be determined by the user.

Restrictions: For Research Use only

Handling

Concentration: 1,0 mg/mL

Buffer: Phosphate buffered saline (PBS) with 0.05 % sodium azide, approx. pH 7.2.

Preservative: Sodium azide

Precaution of Use: This product contains sodium azide: a POISONOUS AND HAZARDOUS SUBSTANCE which should be handled by trained staff only.

Handling Advice: Avoid repeated freezing and thawing.

Storage: 4 °C/-20 °C

Storage Comment: Store the antibody undiluted at 2-8 °C for one month or (in aliquots) at -20 °C for longer.

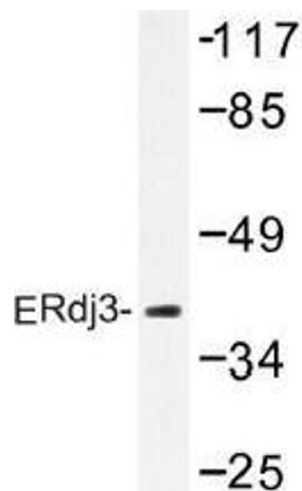


Image 1.

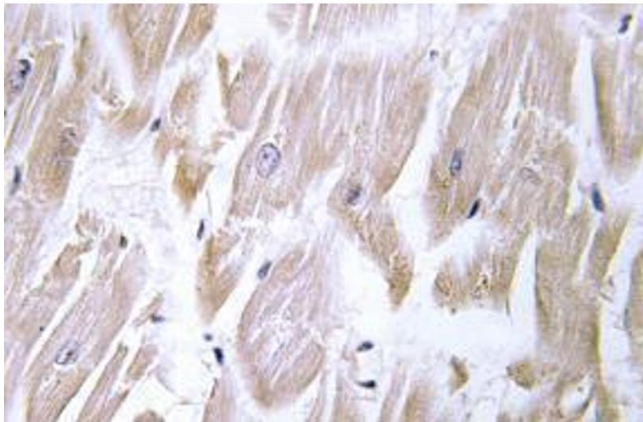


Image 2.