

Datasheet for ABIN317941
anti-ADCY4 antibody[Go to Product page](#)

1 Image

Overview

Quantity:	0.1 mg
Target:	ADCY4
Reactivity:	Human, Mouse, Rat
Host:	Rabbit
Clonality:	Polyclonal
Conjugate:	This ADCY4 antibody is un-conjugated
Application:	Western Blotting (WB), Enzyme Immunoassay (EIA)

Product Details

Specificity:	A Cyclase IV antibody detects endogenous levels of A Cyclase IV protein.(region surrounding Leu226)
Purification:	Affinity chromatography

Target Details

Target:	ADCY4
Alternative Name:	Adenylate Cyclase Type 4 (ADCY4 Products)
Background:	Adenylyl cyclases function to convert ATP to cyclic AMP in response to activation by a variety of hormones, neurotransmitters and other regulatory molecules. Cyclic AMP, in turn, activates several other target molecules to control a broad range of diverse phenomena such as metabolism, gene transcription and memory. Adenylyl cyclases respond to receptor-initiated signals, mediated by the Gs and Gi heterotrimeric G proteins. The binding of an agonist to a Gs-

Target Details

coupled receptor catalyzes the exchange of GDP (bound to Gα s) for GTP, the dissociation of GTP-Gα s from Gβγ and Gα s-mediated activation of adenylyl cyclase. Adenylyl cyclase IV (AC IV) and IX mRNA are expressed in all kidney nephron segments. AC IV exhibits moderate staining in type II and type IV fibrocytes in rat cochlea and immunoreactivity is also observed in type I fibrocytes. Activation of the D2 dopaminergic and m4 muscarine receptors inhibits the activity of adenylyl cyclase isozymes I, V, VI and VIII, whereas type II, IV and VII are stimulated and type III is not affected. Synonyms: ADCY4, ATP pyrophosphate-lyase 4, Adenylate cyclase type IV, Adenylyl cyclase 4

Molecular Weight:	approx. 120 kDa
Gene ID:	196883
NCBI Accession:	NP_001185497
UniProt:	Q8NFM4
Pathways:	EGFR Signaling Pathway , Neurotrophin Signaling Pathway , Thyroid Hormone Synthesis , cAMP Metabolic Process , Myometrial Relaxation and Contraction , G-protein mediated Events , Interaction of EGFR with phospholipase C-gamma

Application Details

Application Notes:	ELISA: 1: 20000approx. 1: 40000. WB: 1: 500approx. 1: 1000. Other applications not tested. Optimal dilutions are dependent on conditions and should be determined by the user.
--------------------	--

Restrictions:	For Research Use only
---------------	-----------------------

Handling

Concentration:	1,0 mg/mL
Buffer:	Phosphate buffered saline (PBS) with 0.05 % sodium azide, approx. pH 7.2.
Preservative:	Sodium azide
Precaution of Use:	This product contains sodium azide: a POISONOUS AND HAZARDOUS SUBSTANCE which should be handled by trained staff only.
Handling Advice:	Avoid repeated freezing and thawing.
Storage:	4 °C/-20 °C
Storage Comment:	Store the antibody undiluted at 2-8 °C for one month or (in aliquots) at -20 °C for longer.

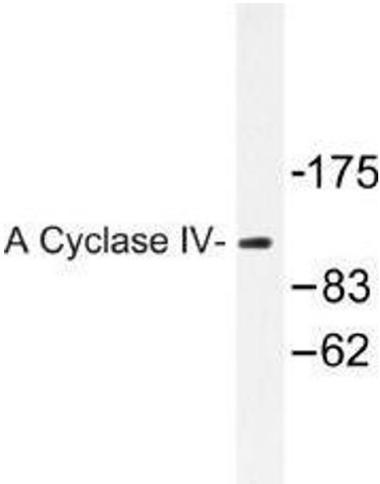


Image 1.