

Datasheet for ABIN3180418
anti-C1S antibody (Arg437, cleaved)[Go to Product page](#)

1 Image

Overview

Quantity:	100 µL
Target:	C1S
Binding Specificity:	Arg437, cleaved
Reactivity:	Human
Host:	Rabbit
Clonality:	Polyclonal
Conjugate:	This C1S antibody is un-conjugated
Application:	Western Blotting (WB), ELISA

Product Details

Immunogen:	Synthesized peptide derived from the Internal region of human C1s HC.
Isotype:	IgG
Specificity:	Cleaved-C1s HC (R437) Polyclonal Antibody detects endogenous levels of fragment of activated C1s HC protein resulting from cleavage adjacent to R437.
Characteristics:	Rabbit Polyclonal to Cleaved-C1s HC (R437).
Purification:	The antibody was affinity-purified from rabbit antiserum by affinity-chromatography using epitope-specific immunogen.

Target Details

Target:	C1S
---------	-----

Target Details

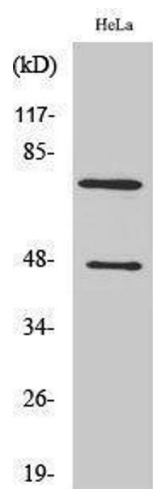
Alternative Name:	C1s HC (C1S Products)
Molecular Weight:	47/76 kDa
Gene ID:	716
UniProt:	P09871
Pathways:	Complement System

Application Details

Application Notes:	WB 1:500-1:2000, ELISA 1:20000,
Restrictions:	For Research Use only

Handling

Format:	Liquid
Concentration:	1 mg/mL
Buffer:	Liquid in PBS containing 50 % glycerol, 0.5 % BSA and 0.02 % sodium azide.
Preservative:	Sodium azide
Precaution of Use:	This product contains Sodium azide: a POISONOUS AND HAZARDOUS SUBSTANCE which should be handled by trained staff only.
Handling Advice:	Avoid repeated freeze/thaw cycles.
Storage:	-20 °C
Storage Comment:	Store at -20°C.



Western Blotting

Image 1.