



[Go to Product page](#)

Datasheet for ABIN3180618  
**anti-FER antibody (Ser376)**

2 Images

Overview

Quantity:	100 µL
Target:	FER
Binding Specificity:	Ser376
Reactivity:	Human, Mouse
Host:	Rabbit
Clonality:	Polyclonal
Conjugate:	This FER antibody is un-conjugated
Application:	Western Blotting (WB), ELISA

Product Details

Immunogen:	Synthesized peptide derived from human Fer around the non-phosphorylation site of Y402.
Isotype:	IgG
Specificity:	Fer Polyclonal Antibody detects endogenous levels of Fer protein.
Characteristics:	Rabbit Polyclonal to Fer.
Purification:	The antibody was affinity-purified from rabbit antiserum by affinity-chromatography using epitope-specific immunogen.

Target Details

Target:	FER
Alternative Name:	Fer ( <a href="#">FER Products</a> )

## Target Details

Molecular Weight: 77 kDa

Gene ID: 2241

UniProt: [P16591](#)

## Application Details

Application Notes: WB 1:500-1:2000, ELISA 1:40000,

Restrictions: For Research Use only

## Handling

Format: Liquid

Concentration: 1 mg/mL

Buffer: Liquid in PBS containing 50 % glycerol, 0.5 % BSA and 0.02 % sodium azide.

Preservative: Sodium azide

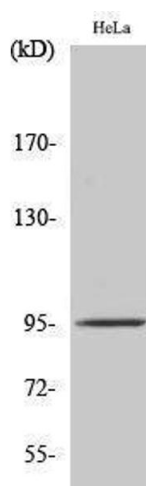
Precaution of Use: This product contains Sodium azide: a POISONOUS AND HAZARDOUS SUBSTANCE which should be handled by trained staff only.

Handling Advice: Avoid repeated freeze/thaw cycles.

Storage: -20 °C

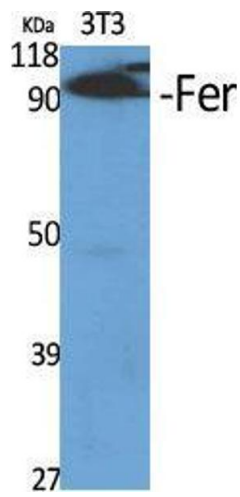
Storage Comment: Store at -20°C.

## Images



### Western Blotting

Image 1.



### Western Blotting

**Image 2.** Western Blot (WB) analysis of specific cells using Fer Polyclonal Antibody.