



[Go to Product page](#)

Datasheet for ABIN3180622

## anti-FGFR1/FGFR2 antibody (Ser10)

### 1 Image

#### Overview

Quantity:	100 µL
Target:	FGFR1/FGFR2
Binding Specificity:	Ser10
Reactivity:	Human, Rat, Mouse
Host:	Rabbit
Clonality:	Polyclonal
Conjugate:	This FGFR1/FGFR2 antibody is un-conjugated
Application:	Western Blotting (WB), ELISA

#### Product Details

Immunogen:	Synthesized peptide derived from human Flg/Bek around the non-phosphorylation site of Y463/466.
Isotype:	IgG
Specificity:	Flg/Bek Polyclonal Antibody detects endogenous levels of Flg/Bek protein.
Characteristics:	Rabbit Polyclonal to Flg/Bek.
Purification:	The antibody was affinity-purified from rabbit antiserum by affinity-chromatography using epitope-specific immunogen.

#### Target Details

Target:	FGFR1/FGFR2
---------	-------------

## Target Details

Alternative Name:	Flg/Bek ( <a href="#">FGFR1/FGFR2 Products</a> )
Molecular Weight:	27 kDa
Gene ID:	2260, 2263
UniProt:	<a href="#">P11362</a> , <a href="#">P21802</a>

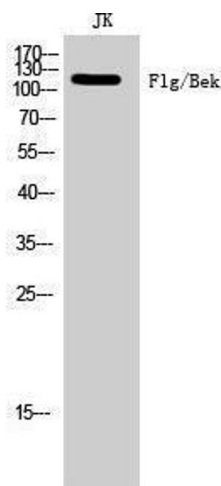
## Application Details

Application Notes:	WB 1:500-1:2000, ELISA 1:10000,
Restrictions:	For Research Use only

## Handling

Format:	Liquid
Concentration:	1 mg/mL
Buffer:	Liquid in PBS containing 50 % glycerol, 0.5 % BSA and 0.02 % sodium azide.
Preservative:	Sodium azide
Precaution of Use:	This product contains Sodium azide: a POISONOUS AND HAZARDOUS SUBSTANCE which should be handled by trained staff only.
Handling Advice:	Avoid repeated freeze/thaw cycles.
Storage:	-20 °C
Storage Comment:	Store at -20°C.

## Images



### Western Blotting

Image 1.