



[Go to Product page](#)

Datasheet for ABIN3180806
anti-PFKFB2 antibody (Thr226)

1 Image

Overview

Quantity:	100 µL
Target:	PFKFB2
Binding Specificity:	Thr226
Reactivity:	Human, Mouse, Rat
Host:	Rabbit
Clonality:	Polyclonal
Conjugate:	This PFKFB2 antibody is un-conjugated
Application:	Western Blotting (WB), ELISA, Immunohistochemistry (IHC)

Product Details

Immunogen:	Synthesized peptide derived from human PFK-2 car around the non-phosphorylation site of S483.
Isotype:	IgG
Specificity:	PFK-2 car Polyclonal Antibody detects endogenous levels of PFK-2 car protein.
Characteristics:	Rabbit Polyclonal to PFK-2 car.
Purification:	The antibody was affinity-purified from rabbit antiserum by affinity-chromatography using epitope-specific immunogen.

Target Details

Target:	PFKFB2
---------	--------

Target Details

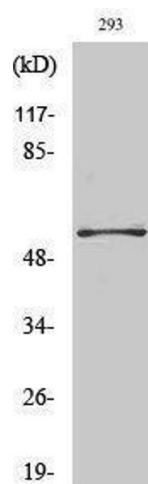
Alternative Name:	PFK-2 Car (PFKFB2 Products)
Molecular Weight:	37 kDa
Gene ID:	5208
UniProt:	O60825
Pathways:	PI3K-Akt Signaling , Positive Regulation of Peptide Hormone Secretion , Regulation of Carbohydrate Metabolic Process

Application Details

Application Notes:	WB 1:500-1:2000, IHC 1:100-1:300, ELISA 1:5000,
Restrictions:	For Research Use only

Handling

Format:	Liquid
Concentration:	1 mg/mL
Buffer:	Liquid in PBS containing 50 % glycerol, 0.5 % BSA and 0.02 % sodium azide.
Preservative:	Sodium azide
Precaution of Use:	This product contains Sodium azide: a POISONOUS AND HAZARDOUS SUBSTANCE which should be handled by trained staff only.
Handling Advice:	Avoid repeated freeze/thaw cycles.
Storage:	-20 °C
Storage Comment:	Store at -20°C.



Western Blotting

Image 1.