

Datasheet for ABIN3180810

## anti-PGE Synthase antibody (Internal Region)



[Go to Product page](#)

### 1 Image

#### Overview

Quantity:	100 µL
Target:	PGE Synthase
Binding Specificity:	Internal Region
Reactivity:	Human, Mouse, Rat
Host:	Rabbit
Clonality:	Polyclonal
Conjugate:	This PGE Synthase antibody is un-conjugated
Application:	Western Blotting (WB), ELISA

#### Product Details

Immunogen:	Synthesized peptide derived from the Internal region of human PGE synthase.
Isotype:	IgG
Specificity:	PGE synthase Polyclonal Antibody detects endogenous levels of PGE synthase protein.
Characteristics:	Rabbit Polyclonal to PGE synthase.
Purification:	The antibody was affinity-purified from rabbit antiserum by affinity-chromatography using epitope-specific immunogen.

#### Target Details

Target:	PGE Synthase
Abstract:	<a href="#">PGE Synthase Products</a>

### Target Details

Molecular Weight:	17 kDa
Gene ID:	9536
UniProt:	<a href="#">O14684</a>

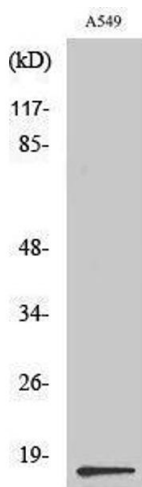
### Application Details

Application Notes:	WB 1:500-1:2000, ELISA 1:10000,
Restrictions:	For Research Use only

### Handling

Format:	Liquid
Concentration:	1 mg/mL
Buffer:	Liquid in PBS containing 50 % glycerol, 0.5 % BSA and 0.02 % sodium azide.
Preservative:	Sodium azide
Precaution of Use:	This product contains Sodium azide: a POISONOUS AND HAZARDOUS SUBSTANCE which should be handled by trained staff only.
Handling Advice:	Avoid repeated freeze/thaw cycles.
Storage:	-20 °C
Storage Comment:	Store at -20°C.

### Images



#### Western Blotting

Image 1.