



[Go to Product page](#)

Datasheet for ABIN3180940

anti-ATP6V1B1 antibody (C-Term)

1 Image

Overview

Quantity:	100 µL
Target:	ATP6V1B1
Binding Specificity:	C-Term
Reactivity:	Human, Mouse
Host:	Rabbit
Clonality:	Polyclonal
Conjugate:	This ATP6V1B1 antibody is un-conjugated
Application:	Western Blotting (WB), Immunohistochemistry (IHC), ELISA

Product Details

Immunogen:	Synthesized peptide derived from the C-terminal region of human V-ATPase B1.
Isotype:	IgG
Specificity:	V-ATPase B1 Polyclonal Antibody detects endogenous levels of V-ATPase B1 protein.
Characteristics:	Rabbit Polyclonal to V-ATPase B1.
Purification:	The antibody was affinity-purified from rabbit antiserum by affinity-chromatography using epitope-specific immunogen.

Target Details

Target:	ATP6V1B1
Alternative Name:	V-ATPase B1 (ATP6V1B1 Products)

Target Details

Molecular Weight:	60 kDa
Gene ID:	525
UniProt:	P15313
Pathways:	Sensory Perception of Sound , Transition Metal Ion Homeostasis , Proton Transport

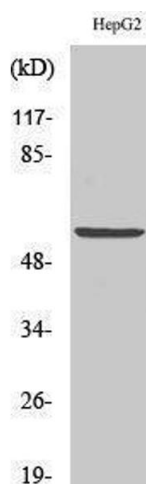
Application Details

Application Notes:	WB 1:500-1:2000, IHC 1:100-1:300, ELISA 1:5000,
Restrictions:	For Research Use only

Handling

Format:	Liquid
Concentration:	1 mg/mL
Buffer:	Liquid in PBS containing 50 % glycerol, 0.5 % BSA and 0.02 % sodium azide.
Preservative:	Sodium azide
Precaution of Use:	This product contains Sodium azide: a POISONOUS AND HAZARDOUS SUBSTANCE which should be handled by trained staff only.
Handling Advice:	Avoid repeated freeze/thaw cycles.
Storage:	-20 °C
Storage Comment:	Store at -20°C.

Images



Western Blotting

Image 1.