



[Go to Product page](#)

Datasheet for ABIN3180980  
**anti-LIF antibody (C-Term)**

2 Images

Overview

Quantity:	100 µL
Target:	LIF
Binding Specificity:	C-Term
Reactivity:	Human
Host:	Rabbit
Clonality:	Polyclonal
Conjugate:	This LIF antibody is un-conjugated
Application:	Western Blotting (WB), ELISA, Immunohistochemistry (Paraffin-embedded Sections) (IHC (p))

Product Details

Immunogen:	Synthesized peptide derived from the C-terminal region of human LIF.
Isotype:	IgG
Specificity:	LIF Polyclonal Antibody detects endogenous levels of LIF protein.
Characteristics:	Rabbit Polyclonal to LIF.
Purification:	The antibody was affinity-purified from rabbit antiserum by affinity-chromatography using epitope-specific immunogen.

Target Details

Target:	LIF
Alternative Name:	LIF ( <a href="#">LIF Products</a> )

## Target Details

---

Molecular Weight:	25 kDa
Gene ID:	3976
UniProt:	<a href="#">P15018</a>
Pathways:	<a href="#">JAK-STAT Signaling</a> , <a href="#">Positive Regulation of Peptide Hormone Secretion</a> , <a href="#">Negative Regulation of Hormone Secretion</a> , <a href="#">Stem Cell Maintenance</a> , <a href="#">Growth Factor Binding</a>

## Application Details

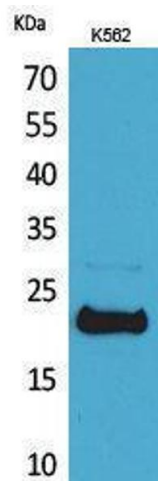
---

Application Notes:	WB 1:500-1:2000, IHC-P 1:100-300, ELISA 1:20000,
Restrictions:	For Research Use only

## Handling

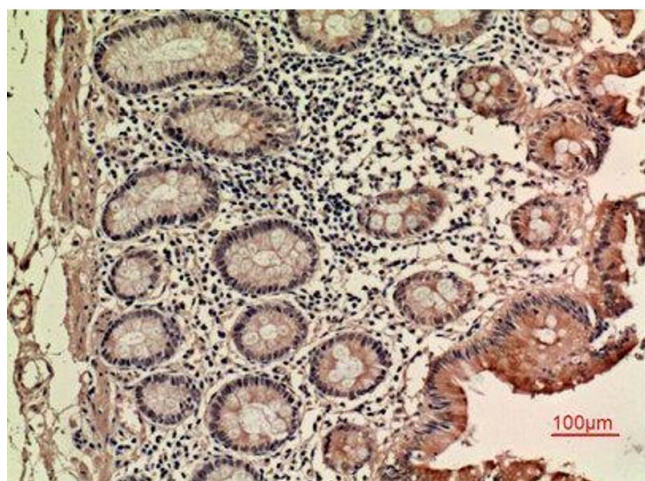
---

Format:	Liquid
Concentration:	1 mg/mL
Buffer:	Liquid in PBS containing 50 % glycerol, 0.5 % BSA and 0.02 % sodium azide.
Preservative:	Sodium azide
Precaution of Use:	This product contains Sodium azide: a POISONOUS AND HAZARDOUS SUBSTANCE which should be handled by trained staff only.
Handling Advice:	Avoid repeated freeze/thaw cycles.
Storage:	-20 °C
Storage Comment:	Store at -20°C.



### Western Blotting

Image 1.



### Immunohistochemistry

Image 2. Immunohistochemistry (IHC) analysis of paraffin-embedded Human Colon, antibody was diluted at 1:100.