

Datasheet for ABIN3180981
anti-ACTC1 antibody (N-Term)

4 Images

[Go to Product page](#)

Overview

Quantity:	100 µL
Target:	ACTC1
Binding Specificity:	N-Term
Reactivity:	Human, Mouse, Rat
Host:	Rabbit
Clonality:	Polyclonal
Application:	Western Blotting (WB), ELISA, Immunohistochemistry (Paraffin-embedded Sections) (IHC (p))

Product Details

Immunogen:	Synthesized peptide derived from the N-terminal region of human Actin- α cardiac muscle.
Isotype:	IgG
Specificity:	Actin- α cardiac muscle Polyclonal Antibody detects endogenous levels of Actin- α cardiac muscle protein.
Characteristics:	Rabbit Polyclonal to Actin- α cardiac muscle.
Purification:	The antibody was affinity-purified from rabbit antiserum by affinity-chromatography using epitope-specific immunogen.

Target Details

Target:	ACTC1
Alternative Name:	Actin- α Cardiac Muscle (ACTC1 Products)

Target Details

Molecular Weight:	42.019 kDa
Gene ID:	70
UniProt:	P68032
Pathways:	Myometrial Relaxation and Contraction

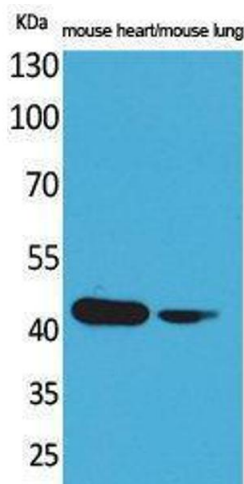
Application Details

Application Notes:	WB 1:500-1:2000, IHC-P 1:100-300, ELISA 1:20000,
Restrictions:	For Research Use only

Handling

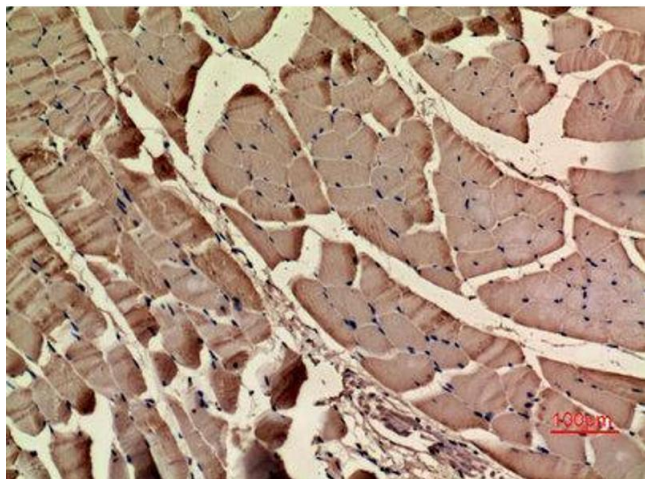
Format:	Liquid
Concentration:	1 mg/mL
Buffer:	Liquid in PBS containing 50 % glycerol, 0.5 % BSA and 0.02 % sodium azide.
Preservative:	Sodium azide
Precaution of Use:	This product contains Sodium azide: a POISONOUS AND HAZARDOUS SUBSTANCE which should be handled by trained staff only.
Handling Advice:	Avoid repeated freeze/thaw cycles.
Storage:	-20 °C
Storage Comment:	Store at -20°C.

Images



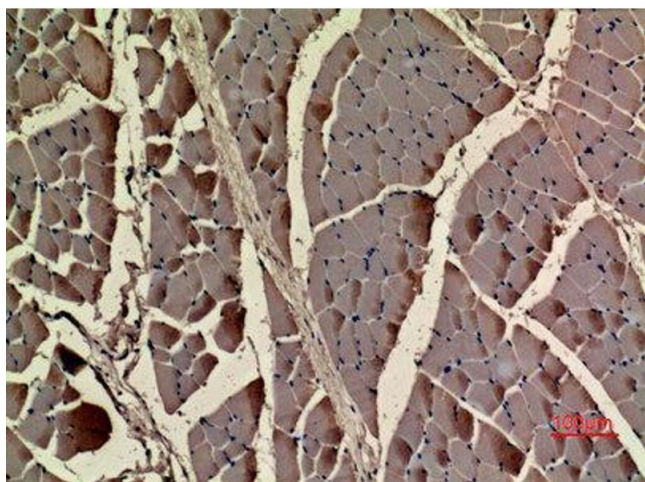
Western Blotting

Image 1.



Immunohistochemistry

Image 2. Immunohistochemistry (IHC) analysis of paraffin-embedded Rat Muscle, antibody was diluted at 1:100.



Immunohistochemistry

Image 3. Immunohistochemistry (IHC) analysis of paraffin-embedded Rat Muscle, antibody was diluted at 1:100.

Please check the [product details page](#) for more images. Overall 4 images are available for ABIN3180981.