



[Go to Product page](#)

Datasheet for ABIN3181034

anti-Thymidine Phosphorylase antibody (N-Term)

3 Images

Overview

Quantity:	100 µL
Target:	Thymidine Phosphorylase (TYMP)
Binding Specificity:	N-Term
Reactivity:	Human
Host:	Rabbit
Clonality:	Polyclonal
Conjugate:	This Thymidine Phosphorylase antibody is un-conjugated
Application:	Western Blotting (WB), ELISA, Immunohistochemistry (Paraffin-embedded Sections) (IHC (p))

Product Details

Immunogen:	Synthesized peptide derived from the N-terminal region of human PD-ECGF.
Isotype:	IgG
Specificity:	PD-ECGF Polyclonal Antibody detects endogenous levels of PD-ECGF protein.
Characteristics:	Rabbit Polyclonal to PD-ECGF.
Purification:	The antibody was affinity-purified from rabbit antiserum by affinity-chromatography using epitope-specific immunogen.

Target Details

Target:	Thymidine Phosphorylase (TYMP)
Alternative Name:	PD-ECGF (TYMP Products)

Target Details

Molecular Weight:	50 kDa
Gene ID:	1890
UniProt:	P19971
Pathways:	Signaling Events mediated by VEGFR1 and VEGFR2

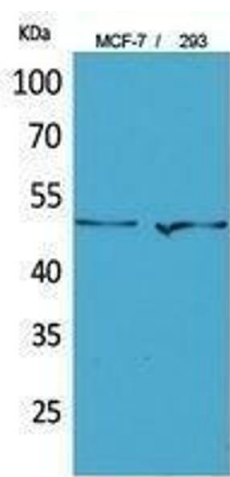
Application Details

Application Notes:	WB 1:500-1:2000, IHC-P 1:100-1:300, ELISA 1:20000,
Restrictions:	For Research Use only

Handling

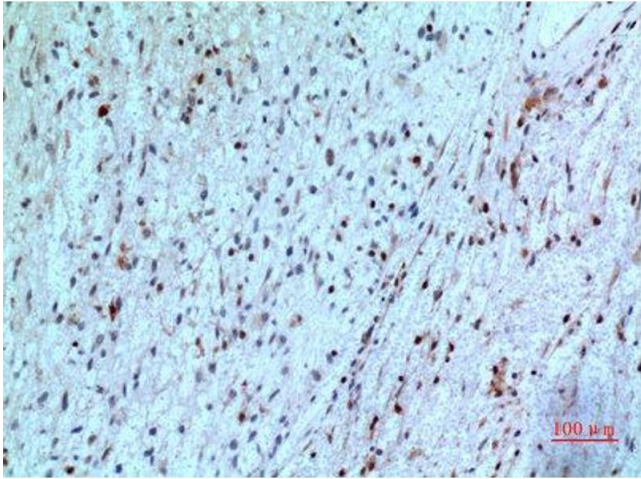
Format:	Liquid
Concentration:	1 mg/mL
Buffer:	Liquid in PBS containing 50 % glycerol, 0.5 % BSA and 0.02 % sodium azide.
Preservative:	Sodium azide
Precaution of Use:	This product contains Sodium azide: a POISONOUS AND HAZARDOUS SUBSTANCE which should be handled by trained staff only.
Handling Advice:	Avoid repeated freeze/thaw cycles.
Storage:	-20 °C
Storage Comment:	Store at -20°C.

Images



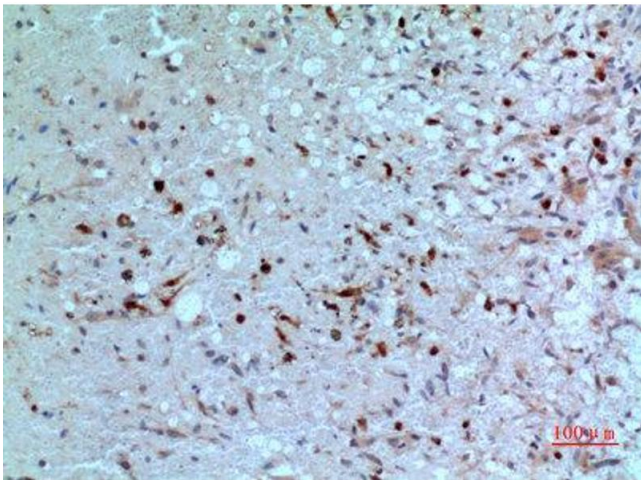
Western Blotting

Image 1.



Immunohistochemistry

Image 2. Immunohistochemistry (IHC) analysis of paraffin-embedded Human Brain, antibody was diluted at 1:100.



Immunohistochemistry

Image 3. Immunohistochemistry (IHC) analysis of paraffin-embedded Human Brain, antibody was diluted at 1:100.