



[Go to Product page](#)

Datasheet for ABIN3181042
anti-DCL1 antibody (Internal Region)

1 Image

Overview

Quantity:	100 µL
Target:	DCL1 (CD302)
Binding Specificity:	Internal Region
Reactivity:	Human
Host:	Rabbit
Clonality:	Polyclonal
Conjugate:	This DCL1 antibody is un-conjugated
Application:	Western Blotting (WB), ELISA

Product Details

Immunogen:	Synthesized peptide derived from the Internal region of human DCL-1.
Isotype:	IgG
Specificity:	DCL-1 Polyclonal Antibody detects endogenous levels of DCL-1 protein.
Characteristics:	Rabbit Polyclonal to DCL-1.
Purification:	The antibody was affinity-purified from rabbit antiserum by affinity-chromatography using epitope-specific immunogen.

Target Details

Target:	DCL1 (CD302)
Alternative Name:	DCL-1 (CD302 Products)

Target Details

Molecular Weight:	26 kDa
Gene ID:	9936
UniProt:	Q8IX05
Pathways:	Regulation of Actin Filament Polymerization

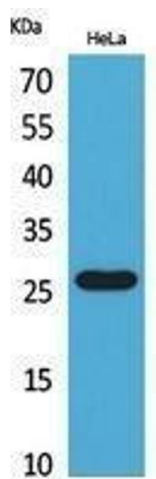
Application Details

Application Notes:	WB 1:500-1:2000, ELISA 1:20000,
Restrictions:	For Research Use only

Handling

Format:	Liquid
Concentration:	1 mg/mL
Buffer:	Liquid in PBS containing 50 % glycerol, 0.5 % BSA and 0.02 % sodium azide.
Preservative:	Sodium azide
Precaution of Use:	This product contains Sodium azide: a POISONOUS AND HAZARDOUS SUBSTANCE which should be handled by trained staff only.
Handling Advice:	Avoid repeated freeze/thaw cycles.
Storage:	-20 °C
Storage Comment:	Store at -20°C.

Validation report #103031 for Immunocytochemistry (ICC)



Western Blotting

Image 1.