

Datasheet for ABIN3181045
anti-HLA-DQ1/DQ2 antibody (Internal Region)



[Go to Product page](#)

4 Images

Overview

Quantity:	100 µL
Target:	HLA-DQ1/DQ2
Binding Specificity:	Internal Region
Reactivity:	Human
Host:	Rabbit
Clonality:	Polyclonal
Conjugate:	This HLA-DQ1/DQ2 antibody is un-conjugated
Application:	ELISA, Western Blotting (WB), Immunohistochemistry (Paraffin-embedded Sections) (IHC (p))

Product Details

Immunogen:	Synthesized peptide derived from the Internal region of human HLA-DQB1/2.
Isotype:	IgG
Specificity:	HLA-DQB1/2 Polyclonal Antibody detects endogenous levels of HLA-DQB1/2 protein.
Characteristics:	Rabbit Polyclonal to HLA-DQB1/2.
Purification:	The antibody was affinity-purified from rabbit antiserum by affinity-chromatography using epitope-specific immunogen.

Target Details

Target:	HLA-DQ1/DQ2
Alternative Name:	HLA-DQB1/2 (HLA-DQ1/DQ2 Products)

Target Details

Molecular Weight:	30 kDa
Gene ID:	100507714
UniProt:	P01920 , P05538

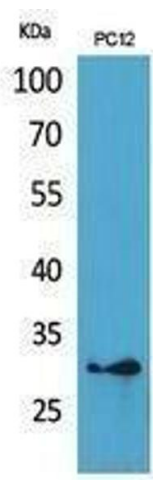
Application Details

Application Notes:	WB 1:500-1:2000, IHC-P 1:100-1:300, ELISA 1:20000,
Restrictions:	For Research Use only

Handling

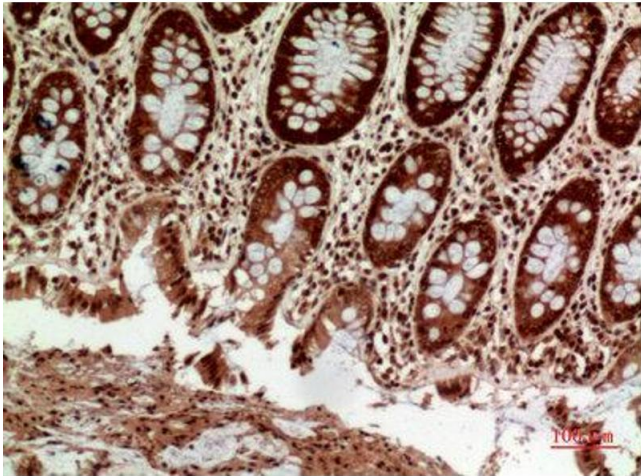
Format:	Liquid
Concentration:	1 mg/mL
Buffer:	Liquid in PBS containing 50 % glycerol, 0.5 % BSA and 0.02 % sodium azide.
Preservative:	Sodium azide
Precaution of Use:	This product contains Sodium azide: a POISONOUS AND HAZARDOUS SUBSTANCE which should be handled by trained staff only.
Handling Advice:	Avoid repeated freeze/thaw cycles.
Storage:	-20 °C
Storage Comment:	Store at -20°C.

Images



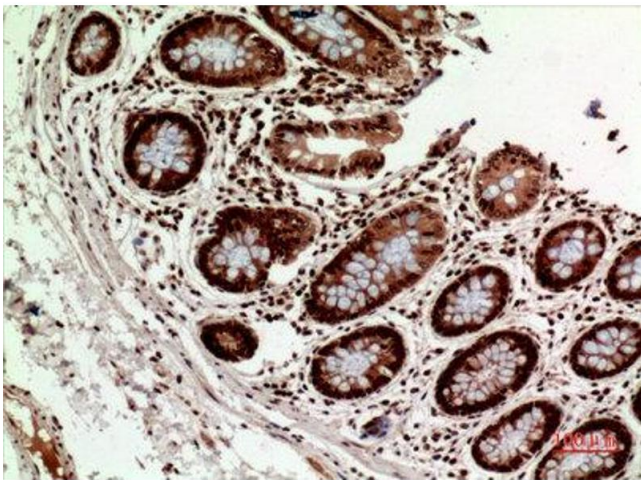
Western Blotting

Image 1.



Immunohistochemistry

Image 2. Immunohistochemistry (IHC) analysis of paraffin-embedded Human Colon, antibody was diluted at 1:100.



Immunohistochemistry

Image 3. Immunohistochemistry (IHC) analysis of paraffin-embedded Human Colon, antibody was diluted at 1:100.

Please check the [product details page](#) for more images. Overall 4 images are available for ABIN3181045.