



[Go to Product page](#)

Datasheet for ABIN3181088

anti-KT3 Tag antibody

1 Image

Overview

Quantity:	100 µL
Target:	KT3 Tag
Reactivity:	Please inquire
Host:	Mouse
Clonality:	Monoclonal
Conjugate:	This KT3 Tag antibody is un-conjugated
Application:	Western Blotting (WB)

Product Details

Sequence:	KPPTPPPEPE T
Clone:	3D11
Isotype:	IgG1
Specificity:	The antibody detects KT3 tag fusion proteins.
Characteristics:	Mouse Monoclonal to KT3-Tag.
Purification:	The antibody was affinity-purified from mouse ascites by affinity-chromatography using specific immunogen.

Target Details

Target:	KT3 Tag
Alternative Name:	KT3-Tag (KT3 Tag Products)

Target Details

Target Type: Tag

Application Details

Application Notes: WB 1:5000

Restrictions: For Research Use only

Handling

Format: Liquid

Concentration: 1 mg/mL

Buffer: Liquid in PBS containing 50 % glycerol, 0.5 % BSA and 0.02 % sodium azide.

Preservative: Sodium azide

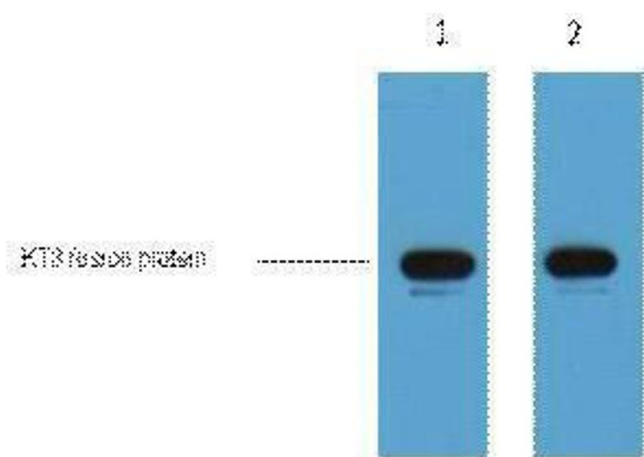
Precaution of Use: This product contains Sodium azide: a POISONOUS AND HAZARDOUS SUBSTANCE which should be handled by trained staff only.

Handling Advice: Avoid repeated freeze/thaw cycles.

Storage: -20 °C

Storage Comment: Store at -20°C.

Images



Western Blotting

Image 1.