



[Go to Product page](#)

Datasheet for ABIN3181150  
**anti-Keratin 6 antibody**

1 Image

### Overview

Quantity:	100 µL
Target:	Keratin 6 (KRT6)
Reactivity:	Human
Host:	Mouse
Clonality:	Monoclonal
Conjugate:	This Keratin 6 antibody is un-conjugated
Application:	Western Blotting (WB)

### Product Details

Clone:	4A1
Isotype:	IgG1
Specificity:	The antibody detects endogenous Cytokeratin 6 proteins.
Characteristics:	Mouse Monoclonal to Cytokeratin 6.
Purification:	The antibody was affinity-purified from mouse ascites by affinity-chromatography using specific immunogen.

### Target Details

Target:	Keratin 6 (KRT6)
Alternative Name:	Cytokeratin 6 ( <a href="#">KRT6 Products</a> )
Gene ID:	3854, 286887, 3853

## Target Details

UniProt: [P02538](#), [P04259](#), [P48668](#)

## Application Details

Application Notes: WB 1:1000

Restrictions: For Research Use only

## Handling

Format: Liquid

Concentration: 1 mg/mL

Buffer: Liquid in PBS containing 50 % glycerol, 0.5 % BSA and 0.02 % sodium azide.

Preservative: Sodium azide

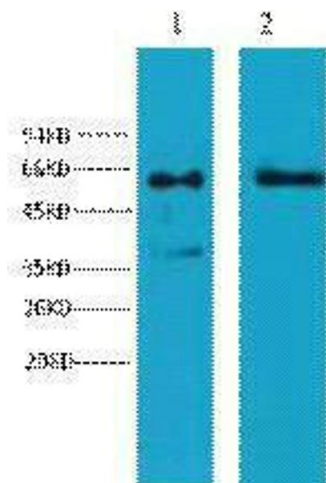
Precaution of Use: This product contains Sodium azide: a POISONOUS AND HAZARDOUS SUBSTANCE which should be handled by trained staff only.

Handling Advice: Avoid repeated freeze/thaw cycles.

Storage: -20 °C

Storage Comment: Store at -20°C.

## Images



### Western Blotting

Image 1.