

Datasheet for ABIN3181195

anti-mCherry antibody[Go to Product page](#)**1** Image

Overview

Quantity:	100 µL
Target:	mCherry
Reactivity:	Discosoma
Host:	Mouse
Clonality:	Monoclonal
Conjugate:	This mCherry antibody is un-conjugated
Application:	Western Blotting (WB)

Product Details

Purification:	The antibody was affinity-purified from rabbit antiserum by affinity-chromatography using epitope-specific immunogen.
---------------	---

Target Details

Target:	mCherry
Alternative Name:	mCherry (mCherry Products)
Target Type:	Chemical

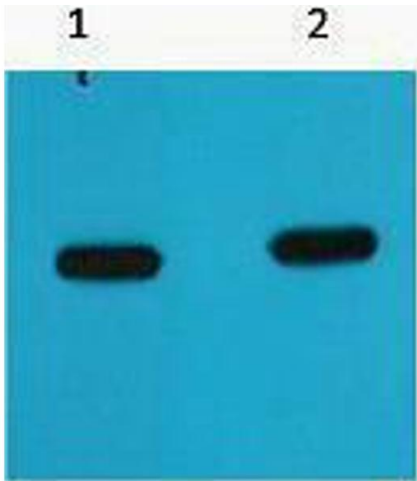
Application Details

Application Notes:	Optimal working dilution should be determined by the investigator.
Restrictions:	For Research Use only

Handling

Format:	Liquid
Concentration:	1 mg/mL
Buffer:	Liquid in PBS containing 50 % glycerol, 0.5 % BSA and 0.02 % sodium azide.
Preservative:	Sodium azide
Precaution of Use:	This product contains Sodium azide: a POISONOUS AND HAZARDOUS SUBSTANCE which should be handled by trained staff only.
Storage:	-20 °C

Images



Western Blotting

Image 1.