



[Go to Product page](#)

Datasheet for ABIN3181221
anti-TUBB2A antibody

2 Images

Overview

Quantity:	100 µL
Target:	TUBB2A
Reactivity:	Mouse, Rat
Host:	Mouse
Clonality:	Monoclonal
Conjugate:	This TUBB2A antibody is un-conjugated
Application:	Western Blotting (WB), Immunoprecipitation (IP)

Product Details

Clone:	Mix
Isotype:	IgG1
Specificity:	The antibody detects endogenous β II tubulin protein.
Characteristics:	Mouse Monoclonal to β II tubulin.
Purification:	The antibody was affinity-purified from mouse ascites by affinity-chromatography using specific immunogen.

Target Details

Target:	TUBB2A
Alternative Name:	beta II Tubulin (TUBB2A Products)
Gene ID:	7280

Target Details

UniProt: [Q13885](#)

Pathways: [Microtubule Dynamics, M Phase](#)

Application Details

Application Notes: WB 1:50000-100000, IP 1:200

Restrictions: For Research Use only

Handling

Format: Liquid

Concentration: 1 mg/mL

Buffer: Liquid in PBS containing 50 % glycerol, 0.5 % BSA and 0.02 % sodium azide.

Preservative: Sodium azide

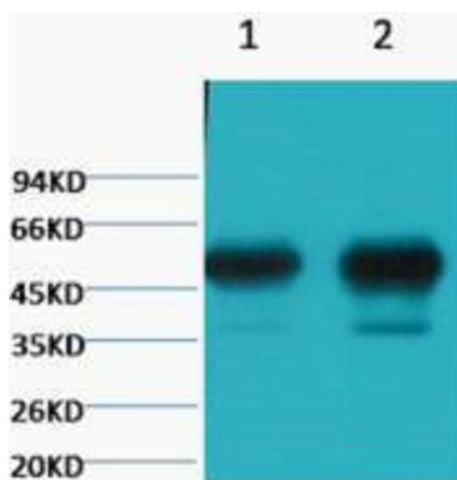
Precaution of Use: This product contains Sodium azide: a POISONOUS AND HAZARDOUS SUBSTANCE which should be handled by trained staff only.

Handling Advice: Avoid repeated freeze/thaw cycles.

Storage: -20 °C

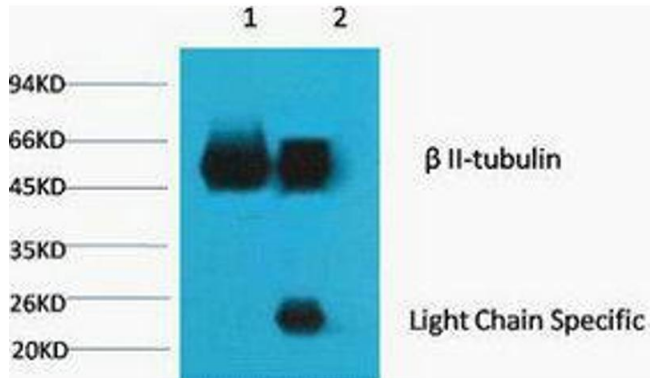
Storage Comment: Store at -20°C.

Images



Western Blotting

Image 1.



Immunoprecipitation

Image 2. Immunoprecipitation (IP) analysis: 1) Input: Mouse Brain Tissue Lysate.