

Datasheet for ABIN3181236

Mouse anti-Rabbit IgG (Heavy & Light Chain) Antibody[Go to Product page](#)**1** Image

Overview

| | |
|----------------------|-----------------------|
| Quantity: | 100 µL |
| Target: | IgG |
| Binding Specificity: | Heavy & Light Chain |
| Reactivity: | Rabbit |
| Host: | Mouse |
| Clonality: | Monoclonal |
| Application: | Western Blotting (WB) |

Product Details

| | |
|------------------|---------------------------------------------------------------------------------------------------------------------------|
| Clone: | Mix |
| Isotype: | IgG1 |
| Specificity: | The antibody reacts with whole molecule rabbit IgG. The antibody may cross-react with immunoglobulins from other species. |
| Characteristics: | Mouse Monoclonal to Rabbit IgG (H+L). |
| Purification: | The antibody was affinity-purified from mouse ascites by affinity-chromatography using specific immunogen. |

Target Details

| | |
|-----------|------------------------------|
| Target: | IgG |
| Abstract: | IgG Products |

Target Details

Target Type: Antibody

Application Details

Application Notes: WB 1:2000-5000

Restrictions: For Research Use only

Handling

Format: Liquid

Concentration: 1 mg/mL

Buffer: Liquid in PBS containing 50 % glycerol, 0.5 % BSA and 0.02 % sodium azide.

Preservative: Sodium azide

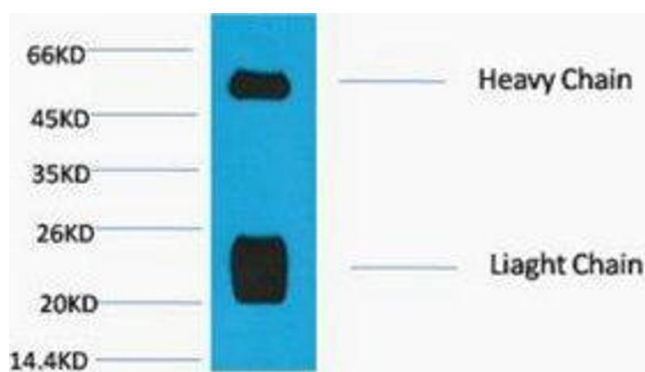
Precaution of Use: This product contains Sodium azide: a POISONOUS AND HAZARDOUS SUBSTANCE which should be handled by trained staff only.

Handling Advice: Avoid repeated freeze/thaw cycles.

Storage: -20 °C

Storage Comment: Store at -20°C.

Images



Western Blotting

Image 1.