

Datasheet for ABIN3181238

**Mouse anti-Rabbit IgG (Light Chain) Antibody**[Go to Product page](#)**1** Image

## Overview

Quantity:	100 µL
Target:	IgG
Binding Specificity:	Light Chain
Reactivity:	Rabbit
Host:	Mouse
Clonality:	Monoclonal
Application:	Western Blotting (WB)

## Product Details

Clone:	8D6
Isotype:	IgG1
Specificity:	The antibody reacts with the light chains on rabbit IgG and with those common to other rabbit immunoglobulins. The antibody does not react with the heavy chain of rabbit IgG. The antibody minimal cross-reaction with bovine, goat, Armenian hamster, horse,
Characteristics:	Mouse Monoclonal to Rabbit IgG (Light Chain Specific).
Purification:	The antibody was affinity-purified from mouse ascites by affinity-chromatography using specific immunogen.

## Target Details

Target:	IgG
---------	-----

Abstract:	<a href="#">IgG Products</a>
-----------	------------------------------

## Target Details

Target Type: Antibody

## Application Details

Application Notes: WB 1:2000-5000

Restrictions: For Research Use only

## Handling

Format: Liquid

Concentration: 1 mg/mL

Buffer: Liquid in PBS containing 50 % glycerol, 0.5 % BSA and 0.02 % sodium azide.

Preservative: Sodium azide

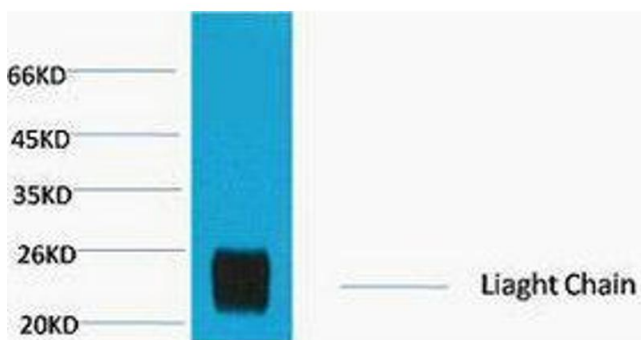
Precaution of Use: This product contains Sodium azide: a POISONOUS AND HAZARDOUS SUBSTANCE which should be handled by trained staff only.

Handling Advice: Avoid repeated freeze/thaw cycles.

Storage: -20 °C

Storage Comment: Store at -20°C.

## Images



### Western Blotting

Image 1.