



[Go to Product page](#)

Datasheet for ABIN3181385  
**anti-ATP1B1 antibody**

1 Image

### Overview

Quantity:	100 µL
Target:	ATP1B1
Reactivity:	Mouse, Rat
Host:	Rabbit
Clonality:	Polyclonal
Conjugate:	This ATP1B1 antibody is un-conjugated
Application:	Western Blotting (WB)

### Product Details

Isotype:	IgG
Specificity:	The antibody detects endogenous beta 1 Sodium Potassium ATPase protein.
Characteristics:	Rabbit Polyclonal to Beta 1 Sodium Potassium ATPase.
Purification:	The antibody was affinity-purified from rabbit antiserum by affinity-chromatography using epitope-specific immunogen.

### Target Details

Target:	ATP1B1
Alternative Name:	beta 1 Sodium Potassium ATPase ( <a href="#">ATP1B1 Products</a> )
Gene ID:	481
UniProt:	<a href="#">P05026</a>

## Target Details

Pathways: [Thyroid Hormone Synthesis](#), [Ribonucleoside Biosynthetic Process](#), [SARS-CoV-2 Protein Interactome](#)

## Application Details

Application Notes: WB 1:1000-2000

Restrictions: For Research Use only

## Handling

Format: Liquid

Concentration: 1 mg/mL

Buffer: Liquid in PBS containing 50 % glycerol, 0.5 % BSA and 0.02 % sodium azide.

Preservative: Sodium azide

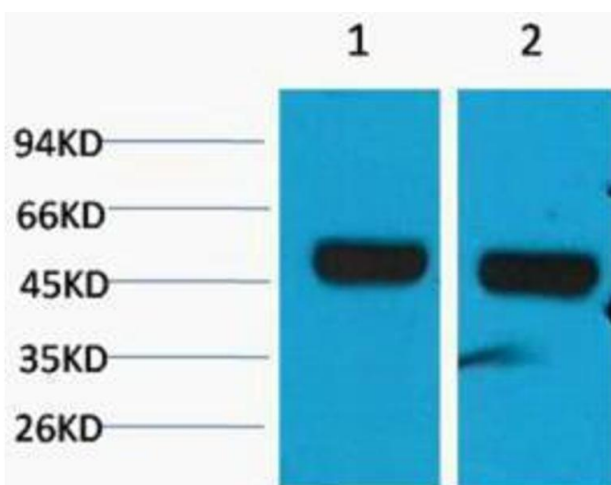
Precaution of Use: This product contains Sodium azide: a POISONOUS AND HAZARDOUS SUBSTANCE which should be handled by trained staff only.

Handling Advice: Avoid repeated freeze/thaw cycles.

Storage: -20 °C

Storage Comment: Store at -20°C.

## Images



### Western Blotting

Image 1.