



[Go to Product page](#)

Datasheet for ABIN3181434

anti-ITGA2 antibody (Internal Region)

3 Images

Overview

Quantity:	100 µL
Target:	ITGA2
Binding Specificity:	Internal Region
Reactivity:	Human, Mouse, Rat
Host:	Rabbit
Clonality:	Polyclonal
Conjugate:	This ITGA2 antibody is un-conjugated
Application:	Western Blotting (WB), ELISA, Immunohistochemistry (Paraffin-embedded Sections) (IHC (p))

Product Details

Immunogen:	Synthesized peptide derived from the Internal region of Integrin alpha2
Isotype:	IgG
Specificity:	Integrin α2 Polyclonal Antibody detects endogenous levels of Integrin α2 protein.
Characteristics:	Rabbit Polyclonal to Integrin α2.
Purification:	The antibody was affinity-purified from rabbit antiserum by affinity-chromatography using epitope-specific immunogen.

Target Details

Target:	ITGA2
Alternative Name:	Integrin Alpha2 (ITGA2 Products)

Target Details

Gene ID:	3673
UniProt:	P17301
Pathways:	CXCR4-mediated Signaling Events , Smooth Muscle Cell Migration , Integrin Complex

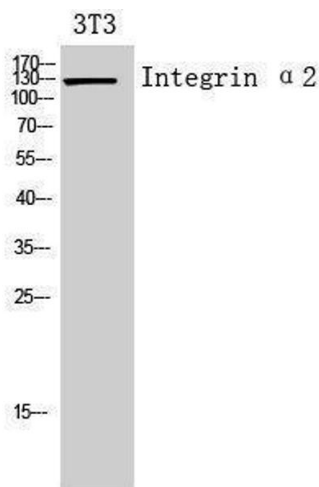
Application Details

Application Notes:	WB 1:500-1:2000, IHC-P 1:100-1:300, ELISA 1:10000,
Restrictions:	For Research Use only

Handling

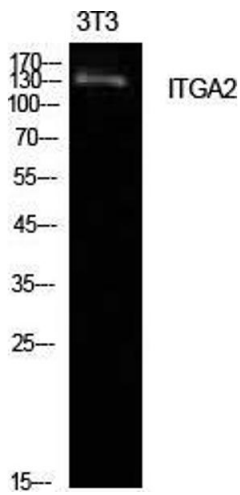
Format:	Liquid
Concentration:	1 mg/mL
Buffer:	Liquid in PBS containing 50 % glycerol, 0.5 % BSA and 0.02 % sodium azide.
Preservative:	Sodium azide
Precaution of Use:	This product contains Sodium azide: a POISONOUS AND HAZARDOUS SUBSTANCE which should be handled by trained staff only.
Handling Advice:	Avoid repeated freeze/thaw cycles.
Storage:	-20 °C
Storage Comment:	Store at -20°C.

Images



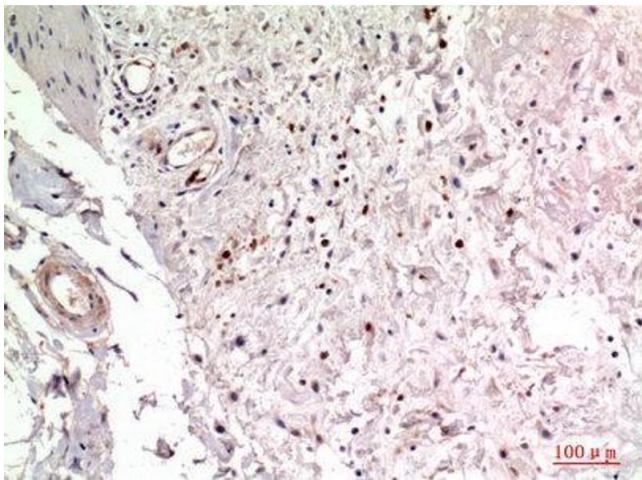
Western Blotting

Image 1.



Western Blotting

Image 2. Western Blot (WB) analysis of NIH-3T3 cells using Integrin alpha2 Polyclonal Antibody.



Immunohistochemistry

Image 3. Immunohistochemistry (IHC) analysis of paraffin-embedded Human Colon, antibody was diluted at 1:100.