



[Go to Product page](#)

Datasheet for ABIN3181521

anti-SLUG antibody

2 Images

Overview

Quantity:	100 µL
Target:	SLUG
Reactivity:	Human, Rat, Mouse
Host:	Rabbit
Clonality:	Polyclonal
Conjugate:	This SLUG antibody is un-conjugated
Application:	Western Blotting (WB), Immunohistochemistry (IHC)

Product Details

Immunogen:	Recombinant Protein
Isotype:	IgG
Specificity:	The antibody detects endogenous SLUG protein.
Characteristics:	Rabbit Polyclonal to SLUG.
Purification:	The antibody was affinity-purified from rabbit antiserum by affinity-chromatography using epitope-specific immunogen.

Target Details

Target:	SLUG
Abstract:	SLUG Products
Gene ID:	6591

Target Details

UniProt: [O43623](#)

Application Details

Application Notes: WB 1:500-1000, IHC 1:200-500

Restrictions: For Research Use only

Handling

Format: Liquid

Concentration: 1 mg/mL

Buffer: Liquid in PBS containing 50 % glycerol, 0.5 % BSA and 0.02 % sodium azide.

Preservative: Sodium azide

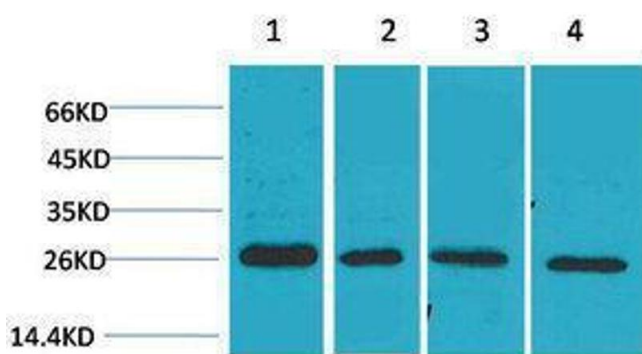
Precaution of Use: This product contains Sodium azide: a POISONOUS AND HAZARDOUS SUBSTANCE which should be handled by trained staff only.

Handling Advice: Avoid repeated freeze/thaw cycles.

Storage: -20 °C

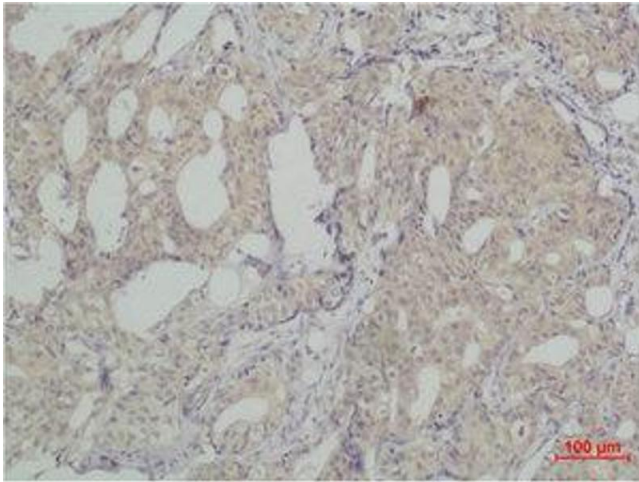
Storage Comment: Store at -20°C.

Images



Western Blotting

Image 1.



Immunohistochemistry

Image 2. Immunohistochemistry (IHC) analysis of paraffin-embedded Human Breast Carcinoma using SLUG Polyclonal Antibody.