

Datasheet for ABIN3181538

anti-TLR13 antibody**1** Image[Go to Product page](#)

Overview

Quantity:	100 µL
Target:	TLR13 (Tlr13)
Reactivity:	Mouse, Rat, Human
Host:	Rabbit
Clonality:	Polyclonal
Conjugate:	This TLR13 antibody is un-conjugated
Application:	Immunohistochemistry (IHC)

Product Details

Immunogen:	Recombinant Protein
Isotype:	IgG
Specificity:	The antibody detects endogenous TLR13 protein.
Characteristics:	Rabbit Polyclonal to TLR13.
Purification:	The antibody was affinity-purified from rabbit antiserum by affinity-chromatography using epitope-specific immunogen.

Target Details

Target:	TLR13 (Tlr13)
Alternative Name:	TLR13 (Tlr13 Products)
Gene ID:	279572

Target Details

UniProt:	Q6R5N8
Pathways:	Activation of Innate immune Response

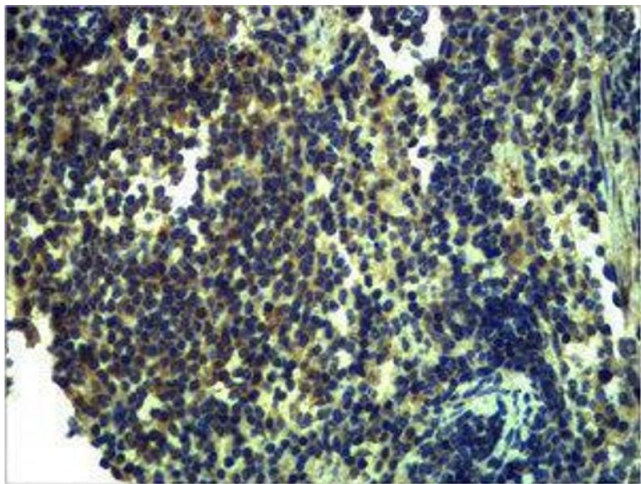
Application Details

Application Notes:	IHC 1:200-500
Restrictions:	For Research Use only

Handling

Format:	Liquid
Concentration:	1 mg/mL
Buffer:	Liquid in PBS containing 50 % glycerol, 0.5 % BSA and 0.02 % sodium azide.
Preservative:	Sodium azide
Precaution of Use:	This product contains Sodium azide: a POISONOUS AND HAZARDOUS SUBSTANCE which should be handled by trained staff only.
Handling Advice:	Avoid repeated freeze/thaw cycles.
Storage:	-20 °C
Storage Comment:	Store at -20°C.

Images



Immunohistochemistry

Image 1.