



[Go to Product page](#)

Datasheet for ABIN3181579

anti-Phosphoserine antibody (phosphorylated)

3 Images

Overview

Quantity:	100 µL
Target:	Phosphoserine
Binding Specificity:	phosphorylated
Reactivity:	Please inquire
Host:	Mouse
Clonality:	Monoclonal
Conjugate:	This Phosphoserine antibody is un-conjugated
Application:	Western Blotting (WB)

Product Details

Immunogen:	Purified Protein
Clone:	5B12
Isotype:	IgG1
Specificity:	The antibody detects endogenous Phosphoserine protein.
Characteristics:	Mouse Monoclonal to Phosphoserine.
Purification:	The antibody was affinity-purified from mouse ascites by affinity-chromatography using epitope-specific immunogen.

Target Details

Target:	Phosphoserine
---------	---------------

Target Details

Abstract: [Phosphoserine Products](#)

Target Type: Amino Acid

Application Details

Application Notes: WB

Restrictions: For Research Use only

Handling

Format: Liquid

Concentration: 1 mg/mL

Buffer: Liquid in PBS containing 50 % glycerol, 0.5 % BSA and 0.02 % sodium azide.

Preservative: Sodium azide

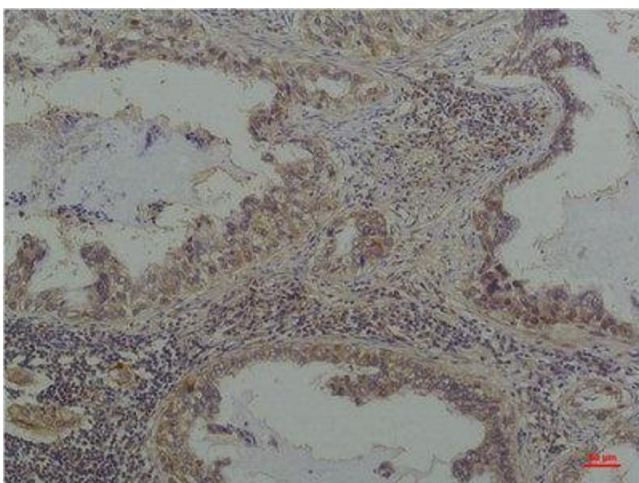
Precaution of Use: This product contains Sodium azide: a POISONOUS AND HAZARDOUS SUBSTANCE which should be handled by trained staff only.

Handling Advice: Avoid repeated freeze/thaw cycles.

Storage: -20 °C

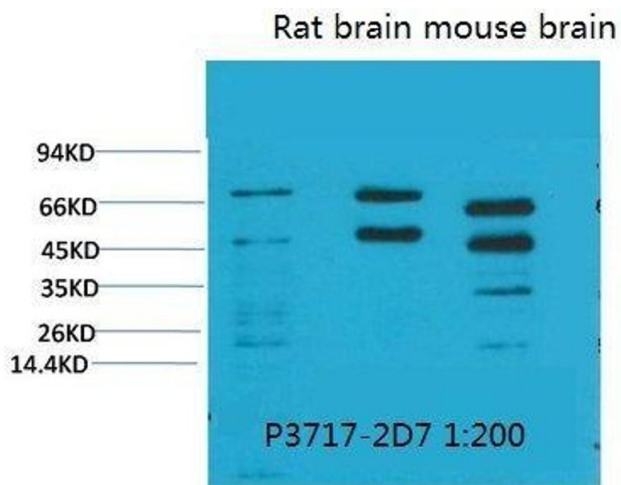
Storage Comment: Store at -20°C.

Images



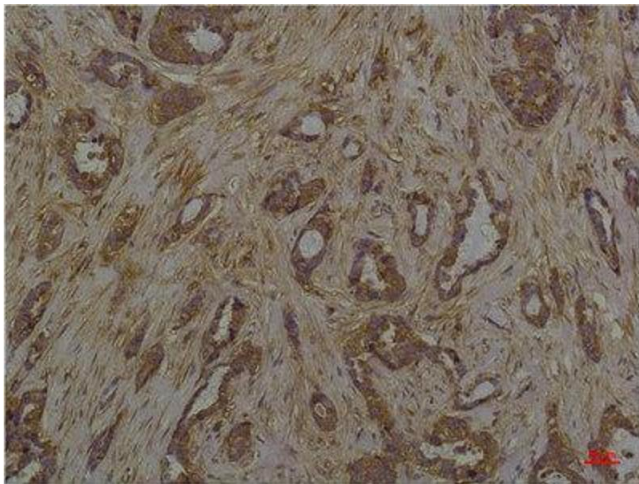
Immunohistochemistry

Image 1. Immunohistochemistry (IHC) analysis of paraffin-embedded Human Lung Carcinoma using Phosphoserine Mouse mAb diluted at 1:200.



Western Blotting

Image 2. Western Blot (WB) analysis of 1) HeLa, 2) Rat Brain Tissue, 3) Mouse Brain Tissue with Phosphoserine Mouse Monoclonal Antibody diluted at 1:2000.



Immunohistochemistry

Image 3. Immunohistochemistry (IHC) analysis of paraffin-embedded Human Breast Carcinoma using Phosphoserine Mouse mAb diluted at 1:200.